



# Flygt 3201

# Table of Contents

<b>1 Introduction.....</b>	<b>2</b>
1.1 Specially approved products.....	2
<b>2 Product Description.....</b>	<b>3</b>
2.1 The data plate.....	3
2.2 Approvals.....	4
2.3 Product denomination.....	5
<b>3 Drive Unit.....</b>	<b>7</b>
3.1 Standard.....	7
3.2 Standard.....	8
3.3 Explosion-proof.....	9
3.4 Explosion-proof.....	10
3.5 3201.091/180/280/290.....	11
<b>4 Hydraulic Unit.....</b>	<b>27</b>
4.1 C_ LT.....	27
4.2 C_ MT.....	28
4.3 C_ MT.....	29
4.4 C_ HT.....	30
4.5 C_ HT.....	31
4.6 C_ HT.....	32
4.7 C_ SH.....	34
4.8 H_ HT-HD.....	35
4.9 LL LT.....	36
4.10 3201.091/180/280/290.....	37
<b>5 Installation Components.....</b>	<b>42</b>
5.1 CP.....	42
5.2 CP.....	44
5.3 CS.....	45
5.4 CS.....	46
5.5 CS/HS.....	47
5.6 CT.....	48
5.7 CZ.....	50
5.8 LL.....	51
5.9 3201.091/180/280/290.....	52
<b>6 Service Parts.....</b>	<b>55</b>
6.1 3201.091/180/280/290.....	55

# 1 Introduction

## Purpose of this manual

The purpose of this manual is to provide necessary information on spare parts and accessories order.

## Disclaimer

Always use genuine Flygt parts. The use of other spare parts or accessories can invalidate any claims for warranty or compensation. Xylem does not take any responsibility for damages that are caused by the use of non-original parts. For more information, contact your local sales and service representative.

## Data for ordering spare parts

The following information is needed for spare part orders:

- Serial number of the product
- Part number
- Quantity of bulk material, see \* in tables

## 1.1 Specially approved products

### Qualification of personnel

Only Xylem or Xylem-authorized service personnel may undertake repair work on specially approved products.

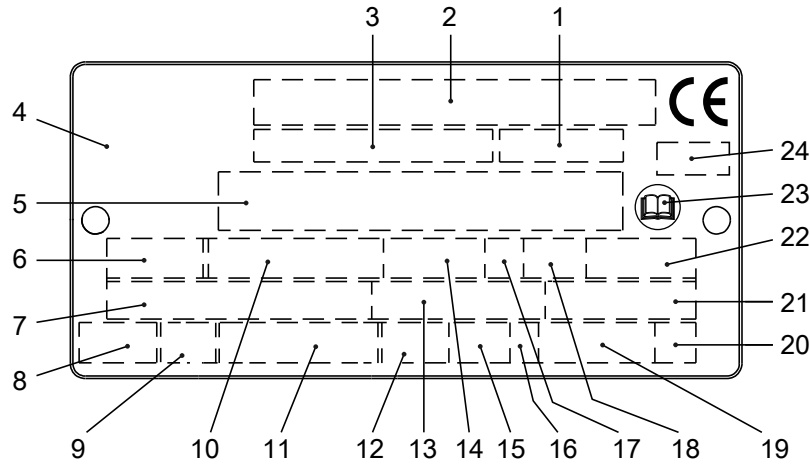
### Dimensional accuracy inspection

Spare parts marked with (Ex) after the part number are subject to dimensional accuracy inspection when used in specially approved products.

# 2 Product Description

## 2.1 The data plate

The data plate is a metal label that is located on the main body of the products. The data plate lists key product specifications. Specially approved products also have an approval plate.



1. Curve code or Propeller code
2. Serial number
3. Product number
4. Country of origin
5. Additional information
6. Phase; type of current; frequency
7. Rated voltage
8. Thermal protection
9. Thermal class
10. Rated shaft power
11. International standard
12. Degree of protection
13. Rated current
14. Rated speed
15. Maximum submergence
16. Direction of rotation: L=left, R=right
17. Duty class
18. Duty factor
19. Product weight
20. Locked rotor code letter
21. Power factor
22. Maximum ambient temperature
23. Read installation manual
24. Notified body, only for EN-approved Ex products

Figure 1: The data plate

WIS006257A

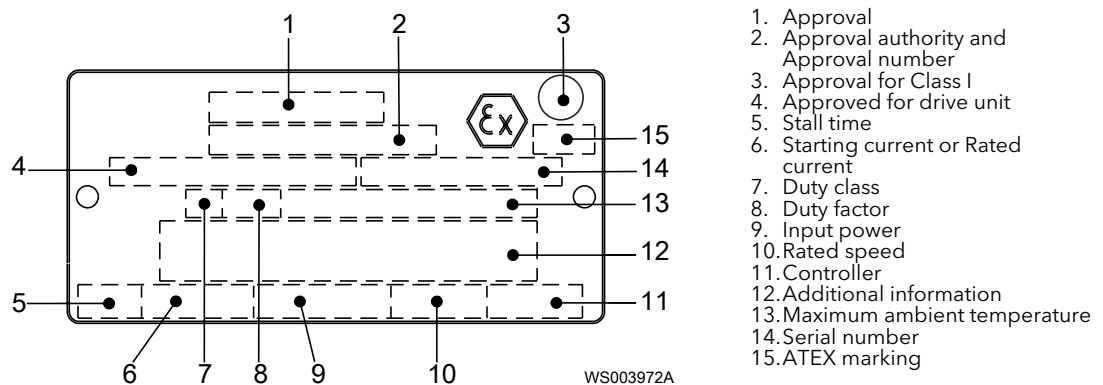
## 2.2 Approvals

### Product approvals for hazardous locations

Pump	Approval
<ul style="list-style-type: none"> <li>• 3201.091</li> <li>• 3201.290</li> </ul>	European Norm (EN) <ul style="list-style-type: none"> <li>• ATEX Directive</li> <li>• EN 60079-0:2009, EN 60079-1:2007, EN 13463-1:2009, EN 13463-5:2011</li> <li>• <math>\text{Ex}</math> I M2 c Ex d I Mb</li> <li>• <math>\text{Ex}</math> II 2 G c Ex d IIB T4 Gb</li> </ul>
	EN approval for cable entry: <ul style="list-style-type: none"> <li>• Certificate number: INERIS 02ATEX9008 U</li> <li>• <math>\text{Ex}</math> II 2 G Ex d IIC Gb or I M2 Ex d I Mb</li> </ul>
	IEC <ul style="list-style-type: none"> <li>• IECEx scheme</li> <li>• IEC 60079-0, IEC 60079-1</li> <li>• Ex d I</li> <li>• Ex d IIB T4</li> </ul>
	FM (FM Approvals) <ul style="list-style-type: none"> <li>• Explosion proof for use in Class I, Div. 1, Group C and D</li> <li>• Dust ignition proof for use in Class II, Div. 1, Group E, F and G</li> <li>• Suitable for use in Class III, Div. 1, Hazardous Locations</li> </ul>
	CSA Ex <ul style="list-style-type: none"> <li>• Explosion proof for use in Class I, Div. 1, Group C and D</li> </ul>

#### EN approval plate

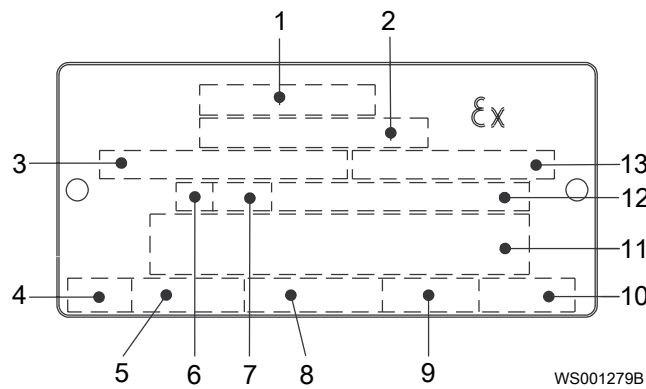
This illustration describes the EN approval plate and the information that is contained in its fields.



#### IEC approval plate

This illustration describes the IEC approval plate and the information that is contained in its fields.

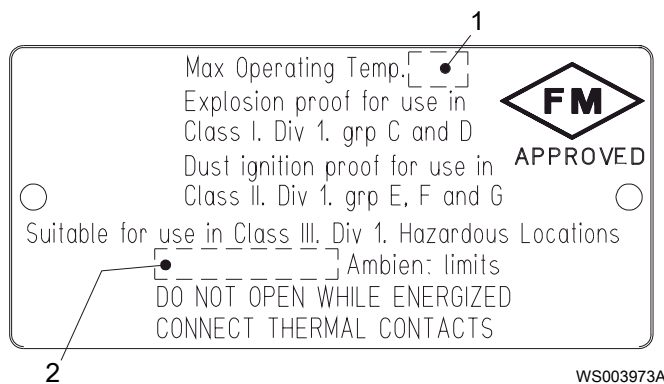
International Norm; not for EU member countries.



1. Approval
2. Approval authority and Approval number
3. Approved for drive unit
4. Stall time
5. Starting current or Rated current
6. Duty class
7. Duty factor
8. Input power
9. Rated speed
10. Controller
11. Additional information
12. Maximum ambient temperature
13. Serial number

### FM approval plate

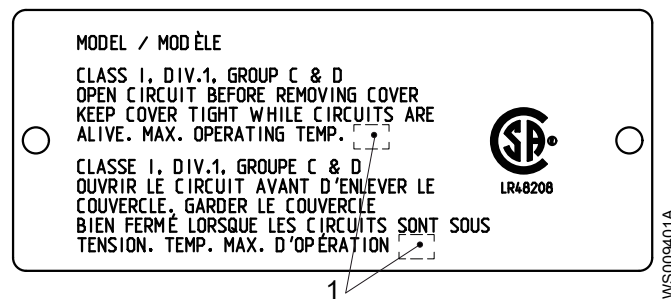
This illustration describes the FM approval plate and the information that is contained in its fields.



1. Temperature class
2. Maximum ambient temperature

### CSA approval plate

This illustration describes the CSA approval plate and the information that is contained in its fields.



1. Temperature class

## 2.3 Product denomination

### Reading instruction

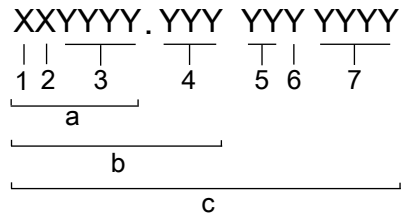
In this section, code characters are illustrated accordingly:

X = letter

Y = digit

The different types of codes are marked up with a, b and c. Code parameters are marked up with numbers.

Codes and parameters



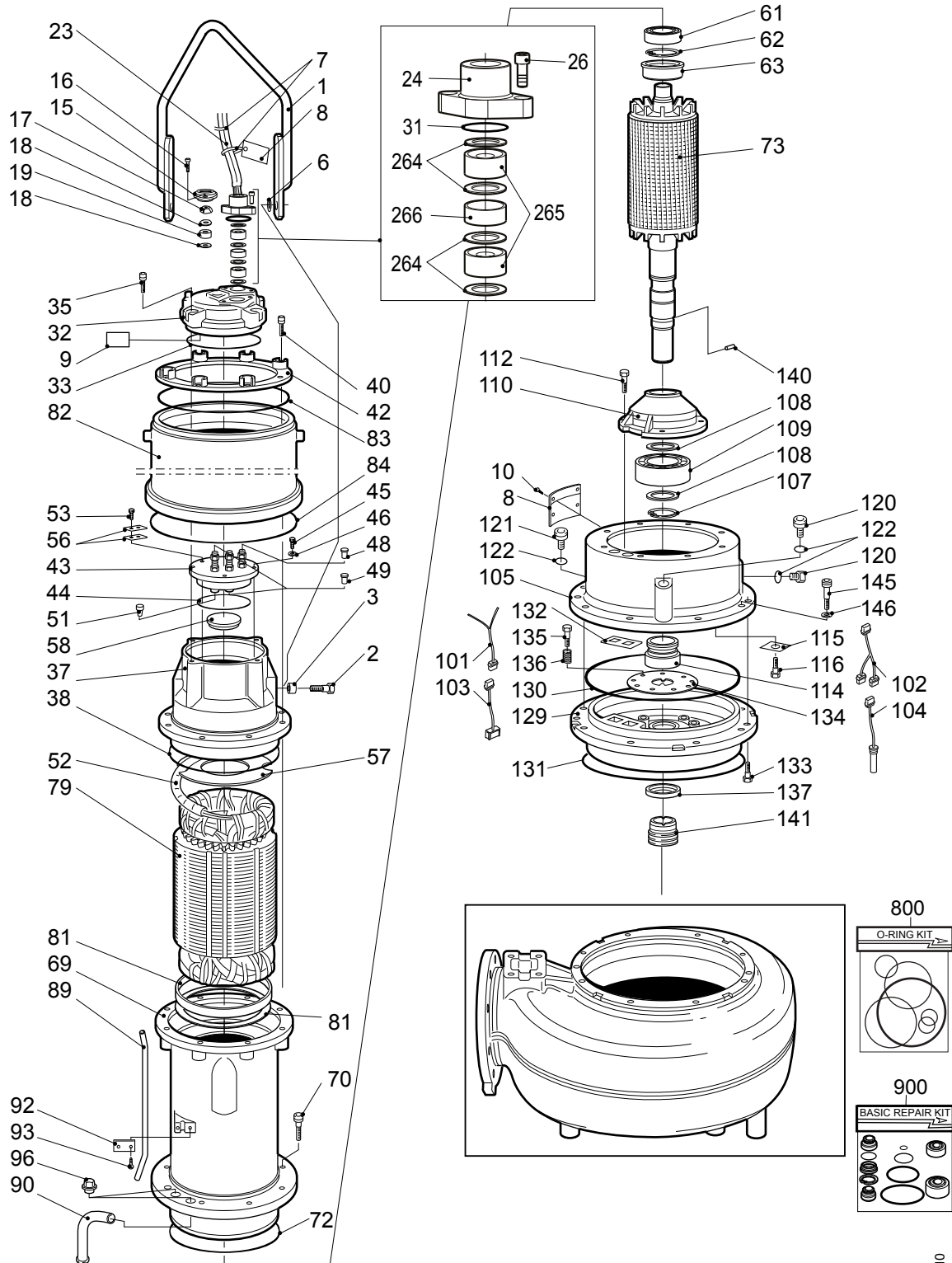
WS006265B

Type of Callout	Number	Indication
Type of code	a	Sales denomination
	b	Product code
	c	Serial number
Parameter	1	Hydraulic end
	2	Type of installation
	3	Sales code
	4	Version
	5	Production year
	6	Production cycle
	7	Running number

# 3 Drive Unit

## 3.1 Standard

3201.180

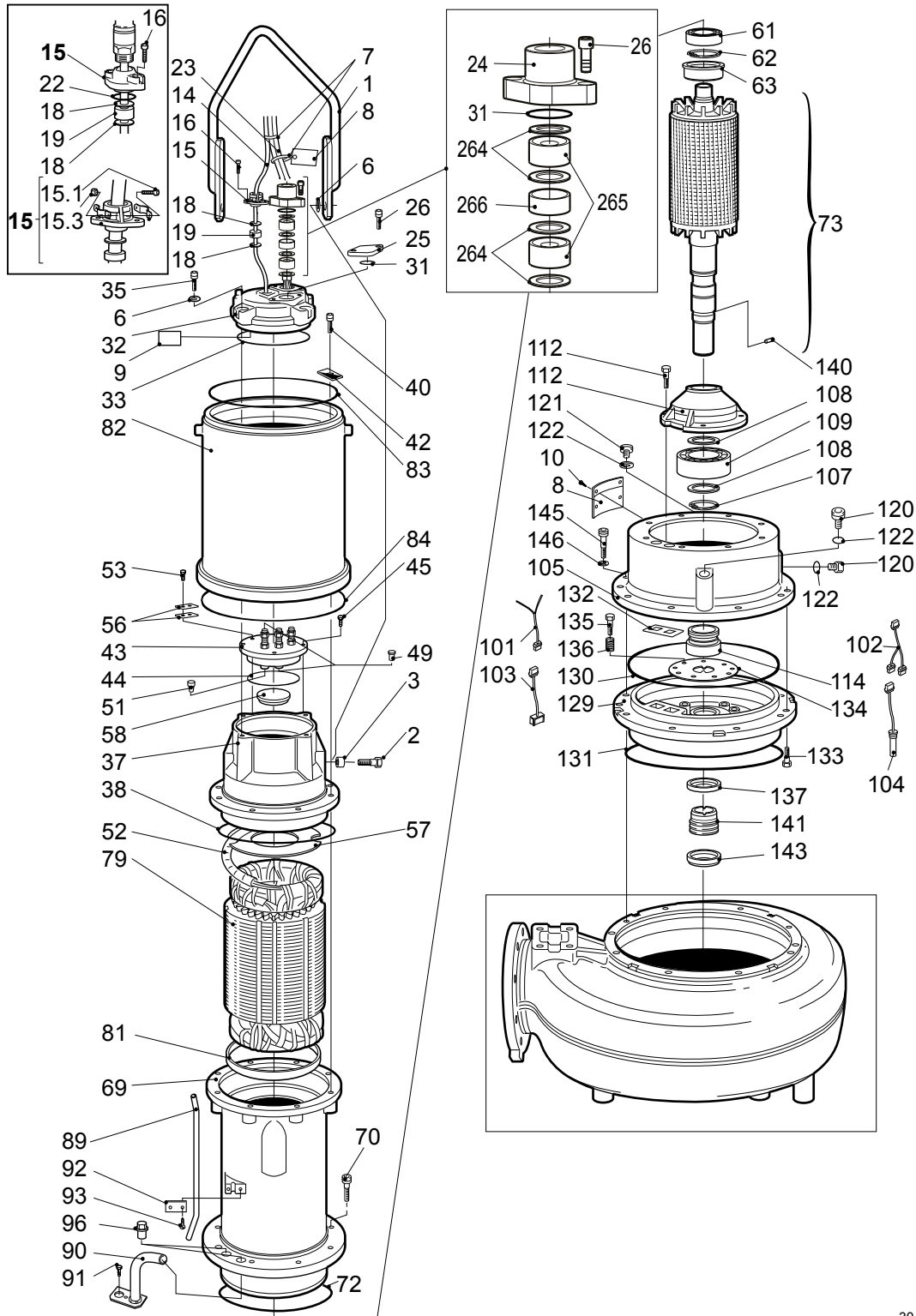


30310



## 3.2 Standard

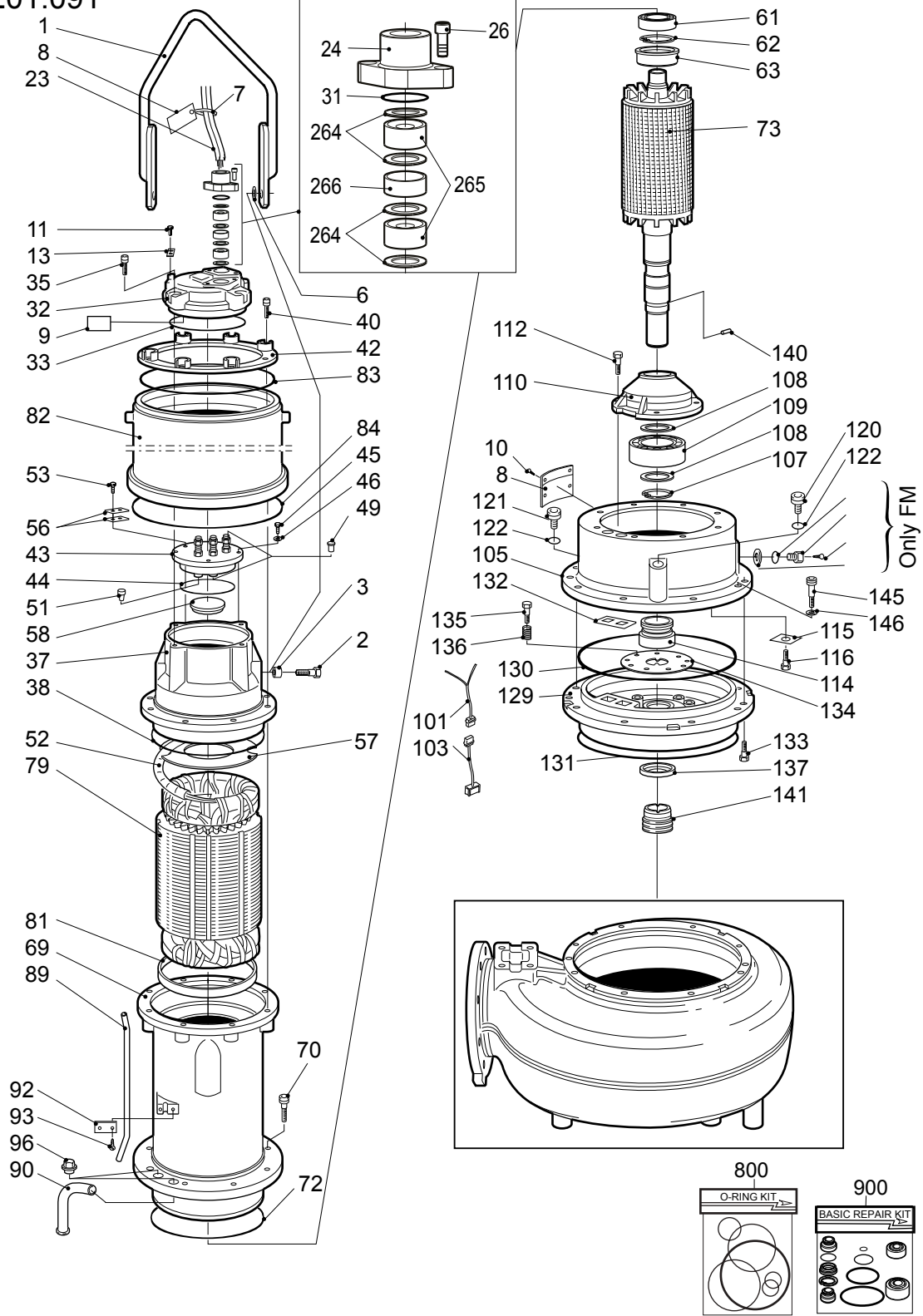
3201.280



30412

### 3.3 Explosion-proof

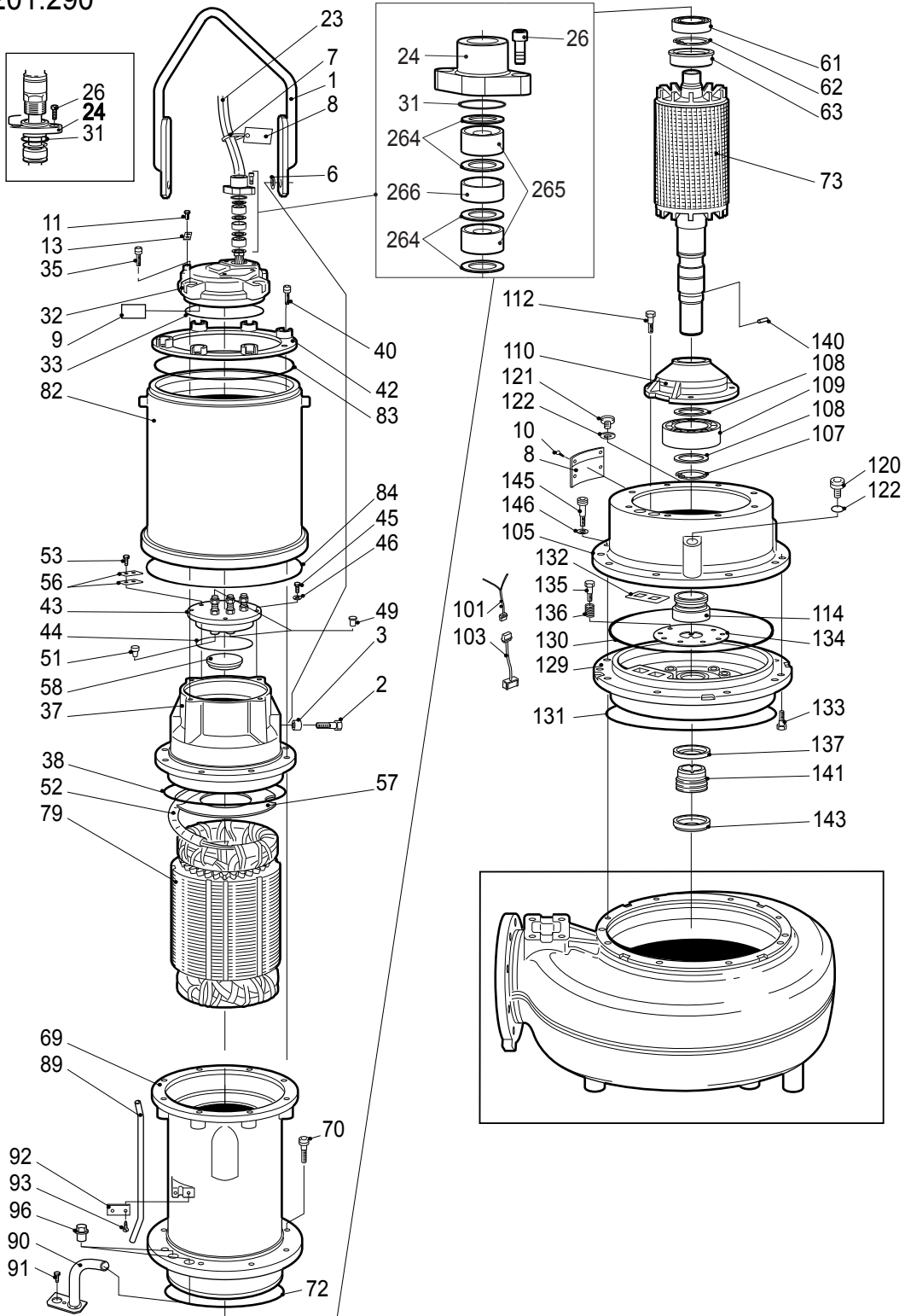
3201.091



30309

### 3.4 Explosion-proof

3201.290



30909

## 3.5 3201.091/180/280/290

Pos. No	Part. No	Type	Denomination	Qty/Version			
				091	180	280	290
1	396 42 00		Lifting handle compl	1	1		
1	395 52 00		Lifting handle compl			1	1
2	82 01 07		Hex.socket hd screw M16X50-A2-70	2			
2	84 34 05		Hexagon head screw M16X50-A2-70		2		
2	83 03 72		Hex.socket hd screw M16X50-A4-70			2	2
3	648 40 00		Sleeve	2	2	2	2
6	83 38 91		Disc spring B-40X20.4X1.5-1	2	2		
6	83 40 28		Disc spring B-40X20.4X1.5-1 SS			2	2
7	83 45 59		Cable tie 200X2.4 PA 6/6 -55+105	1	1	1	1
7	83 45 51		Cable tie 200X4.8			8	
8	630 68 00		Data plate USE 6306801 AS SPARE PART	2	2	2	2
8	630 69 00		Certificate plate EN	2			
8	630 69 00		Certificate plate EN	1			
8	630 69 01	(Ex)	Certificate plate IECEX	2			
8	630 69 01	(Ex)	Certificate plate IECEX	1			
8	431 87 00		Instruction plate	1			
8	630 70 00		Certificate plate FM	2			
8	801 03 00		Name plate	1			
8	630 76 00		Plate HOT WATER PRODUCT		1	1	
8	630 69 00		Certificate plate EN				2
8	630 69 01	(Ex)	Certificate plate IECEX				2
8	630 70 00		Certificate plate FM				1
8	431 87 00		Instruction plate				1
8	630 70 00		Certificate plate FM				2
8	801 03 00		Name plate				1
9	698 77 00		Connection plate	1	1	1	1
9	698 75 00		Connection plate	1	1	1	1
9	550 24 00		Connection plate	1			1
9	550 22 00		Connection plate (FLS)	1	1	1	1
9	426 75 00		Connection plate		1	1	
9	550 24 00		Connection plate		1	1	
9	550 23 00		Connection plate (CLS)		1	1	
9	550 21 00		Connection plate (FLS+CLS)		1	1	
9	727 03 00		Connection plate T1T2		1	1	
9	640 76 00		Caution plate			1	1
9	698 77 00		Connection plate			1	1
10	82 20 88		Drive screw 4X5-A2/A4	8	6		
10	82 20 88		Drive screw 4X5-A2/A4	6			
10	82 20 88		Drive screw 4X5-A2/A4	2			
10	82 21 73		Drive screw 4X5-A4			8	10
10	82 21 73		Drive screw 4X5-A4			2	
10	82 21 73		Drive screw 4X5-A4				4

Pos. No	Part. No	Type	Denomination	Qty/Version			
				091	180	280	290
10	82 21 73		Drive screw 4X5-A4				2
11	249 88 04		Earthing screw	2			2
13	279 29 00		Earthing plate	1			
13	279 29 02		Earthing plate				1
14	94 20 76		Control cable subcab 2X1,5			*	
15	427 13 00		Marking tape	1	1	1	1
15	413 70 00		Entrance flange		1		
15,1	81 73 62		Slotted head screw				
15,3	82 23 30		Hexagon nut M5-A4-70				
15	394 77 33		Motor cable entr.uni SUBCAB 2x1.5mm				1
15,1	81 73 62		Slotted head screw				2
15,3	82 23 30		Hexagon nut M5-A4-70				2
15	416 68 00		Entrance flange Optional				1
16	81 41 04		Hexagon head screw M8X20-A2-70		2		
16	83 02 99		Hex.socket hd screw M8X20-A4-70				2
17	398 98 00		Cable clamp PA 12, 10-12 MM		1		
18	82 40 84		Plain washer (12)-14 MM		2		
18	82 42 36		Plain washer 12.5X35X2-A4-70				2
19	84 35 66		Seal sleeve (10)-12MM		1	1	
22	82 81 56		O-ring 32.2X3 FPM				1
23	94 21 10		Motor cable 4AWG/3-2-1-GC	*			
23	94 21 09		Motor cable SUBCAB 6AWG/3-2-1-GC	*			
23	94 19 78		Motor cable silicone 4G10 SI-SL-BIHFSIH-J 4G10		*		
23	94 21 11		Motor cable SUBCAB 1AWG/3-2-1-GC		*		
23	94 19 83		Motor cable subcab 4G25+S(2X0,5)		*		
23	94 19 84		Motor cable subcab 4G35+S(2X0,5)		*		
23	94 20 94		Motor cable hcr 7X6 S07E6E5-F 7G6				*
24	642 17 01	(Ex)	Entrance flange	1			
24	642 17 01	(Ex)	Entrance flange	2			
24	642 17 00		Entrance flange		2		
24	642 17 00		Entrance flange		1		
24	642 17 03	(Ex)	Entrance flange				2
24	642 17 03	(Ex)	Entrance flange				1
24	429 23 01		Entrance flange EN-APPROVED. 1 1/4" Optional				1
24	642 17 03	(Ex)	Entrance flange				1
24	597 87 01	(Ex)	Entrance flange ISO G1 1/4				1
25	384 88 01		Cover			1	
26	82 00 69		Hex.socket hd screw M12X30-A2-70	2	4		
26	82 00 69		Hex.socket hd screw M12X30-A2-70	4	4		
26	82 00 69		Hex.socket hd screw M12X30-A2-70	4	2		
26	83 03 46		Hex.socket hd screw M12X30-A4-70			4	
26	83 03 46		Hex.socket hd screw M12X30-A4-70			2	
26	83 03 46		Hex.socket hd screw M12X30-A4-70				2

Pos. No	Part. No	Type	Denomination	Qty/Version			
				091	180	280	290
31	82 74 63		O-ring 49.5X3 NBR	1	2		
31	82 74 63		O-ring 49.5X3 NBR	2	2		
31	82 74 63		O-ring 49.5X3 NBR	2	1		
31	82 81 03		O-ring 49.5X3 FPM			2	
31	82 81 03		O-ring 49.5X3 FPM			1	
31	82 81 03		O-ring 49.5X3 FPM				1
32	392 00 06	(Ex)	Entrance cover EN,FM	1			
32	392 00 08	(Ex)	Entrance cover EN	1			
32	392 00 17		Entrance cover		1		
32	392 00 18		Entrance cover		1		
32	392 00 19		Entrance cover		1		
32	392 00 20		Entrance cover		1		
32	416 41 00		Entrance cover			1	
32	416 41 02		Entrance cover			1	
32	416 41 08		Entrance cover			1	
32	416 41 03	(Ex)	Entrance cover				1
33	82 74 93		O-ring 199.3X5.7 NBR	1			
33	82 75 20		O-ring 199.3X5.7 FPM		1		
33	82 74 93		O-ring 199.3X5.7 NBR		1		
33	82 75 20		O-ring 199.3X5.7 FPM			1	1
35	82 00 69		Hex.socket hd screw M12X30-A2-70	4	4		
35	83 03 46		Hex.socket hd screw M12X30-A4-70			4	4
37	443 29 01	(Ex)	Connection housing	1			
37	443 29 00		Connection housing		1		
37	416 48 00		Connection housing			1	
37	416 48 01	(Ex)	Connection housing				1
38	82 75 01		O-ring 279.3X5.7 NBR	1			
38	82 75 22		O-ring 279.3X5.7 FPM		1		
38	82 75 01		O-ring 279.3X5.7 NBR		1		
38	82 75 22		O-ring 279.3X5.7 FPM			1	1
40	82 00 71		Hex.socket hd screw M12X40-A2-70	8	8		
40	83 03 48		Hex.socket hd screw M12X40-A4-70			8	8
42	384 62 00		Bracket	2	2		
42	395 53 00		Square washer			8	
42	384 62 02		Bracket				2
43	426 82 00		Con.term.board unit	1	1	1	1
44	82 74 81		O-ring 139.5X3 NBR	1			
44	82 72 91		O-ring 139.5X3 FPM		1		
44	82 74 81		O-ring 139.5X3 NBR		1		
44	82 72 91		O-ring 139.5X3 FPM			1	
44	82 80 91		O-ring 49.2X5.7 FPM				1
45	81 41 06		Hexagon head screw M8X25-A2-70	4	4		
45	81 41 04		Hexagon head screw M8X20-A2-70			4	4
46	82 35 16		Plain washer 8-A2-170	4	4		4

Pos. No	Part. No	Type	Denomination	Qty/Version			
				091	180	280	290
48	83 42 21		End sleeve 35 MM2; L=18 MM		3		
48	83 42 21		End sleeve 35 MM2; L=18 MM		6		
48	83 42 21		End sleeve 35 MM2; L=18 MM		4		
49	83 42 36		End sleeve 0.75 MM2; L=6 MM	2	2	2	2
49	83 42 35		End sleeve 10 MM2; L=12 MM	6	6		
49	83 42 30		End sleeve 6 MM2; L=10 MM	9	9		
49	83 42 29		End sleeve 4 MM2; L=10 MM	6	6	6	6
49	83 42 39		End sleeve 16 MM2; L=12 MM	6	1		
49	83 42 39		End sleeve 16 MM2; L=12 MM	9	9	9	9
49	83 42 30		End sleeve 6 MM2; L=10 MM	6	6	6	6
49	83 42 39		End sleeve 16 MM2; L=12 MM	9	9	6	6
49	83 42 39		End sleeve 16 MM2; L=12 MM	6	6	6	6
49	83 42 28		End sleeve 2.5 MM2; L=7 MM	6	6		
49	83 42 30		End sleeve 6 MM2; L=10 MM	6	6		6
49	83 42 30		End sleeve 6 MM2; L=10 MM	3			
49	83 42 34		End sleeve 25 MM2; L=15 MM	3			
49	83 42 39		End sleeve 16 MM2; L=12 MM	1			
49	83 42 29		End sleeve 4 MM2; L=10 MM	3			
49	83 42 30		End sleeve 6 MM2; L=10 MM	1			
49	83 42 35		End sleeve 10 MM2; L=12 MM	3			
49	83 42 35		End sleeve 10 MM2; L=12 MM		6		
49	83 42 39		End sleeve 16 MM2; L=12 MM		4		
49	83 42 29		End sleeve 4 MM2; L=10 MM		3		
49	83 42 30		End sleeve 6 MM2; L=10 MM		1		
49	83 42 35		End sleeve 10 MM2; L=12 MM		3		
49	83 42 30		End sleeve 6 MM2; L=10 MM		2		
49	83 42 34		End sleeve 25 MM2; L=15 MM		1		
49	83 42 35		End sleeve 10 MM2; L=12 MM		1		
49	83 42 30		End sleeve 6 MM2; L=10 MM		4		
49	83 42 34		End sleeve 25 MM2; L=15 MM		2		
49	83 42 35		End sleeve 10 MM2; L=12 MM		2		
49	83 42 34		End sleeve 25 MM2; L=15 MM		8		
49	83 42 30		End sleeve 6 MM2; L=10 MM			6	6
49	83 42 30		End sleeve 6 MM2; L=10 MM			6	9
49	83 42 39		End sleeve 16 MM2; L=12 MM			4	
49	83 42 29		End sleeve 4 MM2; L=10 MM			3	
49	83 42 30		End sleeve 6 MM2; L=10 MM			1	
49	83 42 35		End sleeve 10 MM2; L=12 MM			3	
49	83 42 35		End sleeve 10 MM2; L=12 MM			14	
49	83 42 29		End sleeve 4 MM2; L=10 MM				3
49	83 42 30		End sleeve 6 MM2; L=10 MM				1
49	83 42 35		End sleeve 10 MM2; L=12 MM				3
51	83 42 65		Terminal block	1	2	2	1
51	83 42 65		Terminal block	1	4		

Pos. No	Part. No	Type	Denomination	Qty/Version			
				091	180	280	290
51	83 42 65		Terminal block		1	1	
51	83 42 65		Terminal block		2	4	
51	83 42 65		Terminal block			2	
52	94 05 15		Insulating hose D=16 MM	*	*	*	*
52	94 05 17		Insulating hose D=20 MM	*	1		
52	94 05 90		Insulating hose DIAM.22; TEMP.CLASS F155	*	*	*	
52	94 05 17		Insulating hose D=20 MM	*	*	*	*
53	81 41 04		Hexagon head screw M8X20-A2-70	2	2	2	2
56	426 78 00		Earthing plate	2	2	2	2
57	384 76 00		Insulating plate	1	1	1	1
58	319 09 01		Cover	1	1	1	1
61	84 53 76		Roller bearing ECP(40X90X23)	1	1	1	1
62	82 62 24		Retaining ring SGH 90	1	1	1	1
63	563 93 00		Protective washer	1	1	1	1
69	384 82 01	(Ex)	Stator housing	1			
69	384 82 02		Stator housing		1		
69	416 49 00	(Ex)	Stator housing			1	
69	416 49 01	(Ex)	Stator housing				1
70	82 00 71		Hex.socket hd screw M12X40-A2-70	8	8		
70	83 03 48		Hex.socket hd screw M12X40-A4-70			8	8
72	82 75 01		O-ring 279.3X5.7 NBR	1			
72	82 75 22		O-ring 279.3X5.7 FPM		1		
72	82 75 22		O-ring 279.3X5.7 FPM		2		
72	82 75 01		O-ring 279.3X5.7 NBR		1		
72	82 75 22		O-ring 279.3X5.7 FPM			1	1
73	384 52 14	(Ex)	Shaft unit	1			
73	384 52 13	(Ex)	Shaft unit	1			
73	384 56 13	(Ex)	Shaft unit	1			
73	384 56 12	(Ex)	Shaft unit	1			
73	566 33 00	(Ex)	Shaft unit	1	1		
73	384 52 06	(Ex)	Shaft unit		1		
73	384 56 03	(Ex)	Shaft unit		1		
73	384 56 08	(Ex)	Shaft unit		1		
73	384 52 13	(Ex)	Shaft unit		1		
73	384 52 14	(Ex)	Shaft unit		1		
73	384 56 13	(Ex)	Shaft unit		1		
73	384 56 12	(Ex)	Shaft unit		1		
73	384 52 07	(Ex)	Shaft unit			1	1
73	384 52 06	(Ex)	Shaft unit			1	1
73	384 56 03	(Ex)	Shaft unit			1	1
79	558 51 01		Stator 27-22-2a	1	1		
79	558 51 39		Stator 27-22-2a	1	1		



Pos. No	Part. No	Type	Denomination	Qty/Version				
				091	180	280	290	
79	558 51 34		Stator 27-22-2a	3-phase 50 Hz 2-poles 380V Y 220V D P2=30kW	1	1		
79	558 51 38		Stator 27-22-2a	3-phase 50 Hz 2-poles 660V Y 380V D P2=30kW	1	1		
79	558 51 44		Stator 27-22-2a	3-phase 50 Hz 2-poles 400V-440V D P2=30kW	1	1		
79	558 51 50		Stator 27-22-2a	3-phase 50 Hz 2-poles 500V D P2=30kW	1	1		
79	415 75 28		Stator 27-20-4a	3-phase 60 Hz 4-poles 200V-220V D P2=22kW/30hp	1	1		
79	415 75 30		Stator 27-20-4a	3-phase 60 Hz 4-poles 380V D P2=22kW/30hp	1	1		
79	415 75 37		Stator 27-20-4a	Stator 3-phase 60 Hz 4-poles 440V-460V YSER 220V-230V Y// P2=22kW/30hp	1	1		
79	415 75 38		Stator 27-20-4a	3-phase 60 Hz 4-poles 440V-460V D P2=22kW/30hp	1	1		
79	415 75 52		Stator 27-20-4a	3-phase 60 Hz 4-poles 575V-600V D P2=22kW/30hp	1	1		
79	384 50 01		Stator 27-26-4a	3-phase 50 Hz 4-poles 400V Y 230V D P2=30kW	1	1		
				3-phase 50 Hz 4-poles 400V Y 230V D P1=28KW				
				3-phase 50 Hz 4-poles 400V Y 230V D P1=23KW				
79	384 50 39		Stator 27-26-4a	3-phase 50 Hz 4-poles 690V Y 400V D P2=30kW	1	1		
				3-phase 50 Hz 4-poles 690V Y 400V D P1=28KW				
				3-phase 50 Hz 4-poles 690V Y 400V D P1=23KW				
79	415 74 34		Stator 27-20-4f	3-phase 50 Hz 4-poles 380V-400V Y 220V-230V D P2=22kW	1	1		
79	415 74 38		Stator 27-20-4f	3-phase 50 Hz 4-poles 660V-690V Y 380V-400V D P2=22kW	1	1		
79	415 74 40		Stator 27-20-4f	3-phase 50 Hz 4-poles 400V D P2=22kW	1	1		
79	415 74 44		Stator 27-20-4f	3-phase 50 Hz 4-poles 400V-440V D P2=22kW	1	1		
79	415 74 50		Stator 27-20-4f	3-phase 50 Hz 4-poles 500V D P2=22kW	1	1		
79	384 50 28		Stator 27-26-4a	3-phase 50 Hz 4-poles 190V-200V D P2=30kW	1	1		
				3-phase 50 Hz 4-poles 190V-200V D Max P1=29KW				
				3-phase 50 Hz 4-poles 190V-200V D P1=23KW				
				3-phase 60 Hz 4-poles 200V-220V D 380V Y P2=35kW/47hp				
79	384 50 30		Stator 27-26-4a	3-phase 60 Hz 4-poles 380V D P2=35kW/47hp	1	1		

Pos. No	Part. No	Type	Denomination	Qty/Version				
				091	180	280	290	
79	384 50 34		Stator 27-26-4a	3-phase 50 Hz 4-poles 380V Y 220V D P2=30kW 3-phase 50 Hz 4-poles 380V Y 220V D P1=28KW 3-phase 50 Hz 4-poles 380V Y 220V D P1=23KW 3-phase 60 Hz 4-poles 440V-460V Y 260V D P2=35kW/47hp	1	1		
79	384 50 37		Stator 27-26-4a	3-phase 60 Hz 4-poles 440V-460V YSER 220V-230V Y// P2=35kW/47hp	1	1	1	1
79	384 50 38		Stator 27-26-4a	3-phase 50 Hz 4-poles 660V Y 380V D P2=30kW 3-phase 50 Hz 4-poles 660V Y 380V D P1=28KW 3-phase 50 Hz 4-poles 660V Y 380V D P1=23KW Stator 3-phase 60 Hz 4-poles 440V-460V D P2=35kW/47hp M	1	1	1	1
79	384 50 52		Stator 27-26-4a	3-phase 60 Hz 4-poles 575V-600V D P2=35kW/47hp	1	1		
79	384 50 40		Stator 27-26-4a	3-phase 50 Hz 4-poles 400V D P2=30kW 3-phase 50 Hz 4-poles 400V D P1=29KW 3-phase 50 Hz 4-poles 400V D P1=23KW 3-phase 60 Hz 4-poles 400V D P2=35kW/47hp	1	1	1	
79	384 50 44		Stator 27-26-4a	3-phase 50 Hz 4-poles 400V-440V D P2=30kW 3-phase 50 Hz 4-poles 400V-440V D Max P1=29KW 3-phase 50 Hz 4-poles 400V-440V D P1=23KW 3-phase 60 Hz 4-poles 480V D P2=35kW/47hp	1	1	1	1
79	384 50 50		Stator 27-26-4a	3-phase 50 Hz 4-poles 500V D P2=30kW 3-phase 50 Hz 4-poles 500V D P1=28KW 3-phase 50 Hz 4-poles 500V D P1=23KW 3-phase 60 Hz 4-poles 575V D P2=35kW/47hp	1	1	1	1

Pos. No	Part. No	Type	Denomination	Qty/Version			
				091	180	280	290
79	384 54 28		Stator 27-26-6a 3-phase 50 Hz 6-poles 190V-200V D P2=22kW 3-phase 60 Hz 6-poles 200V-220V D 380V Y P1=30KW 3-phase 60 Hz 6-poles 200V-220V D 380V Y P1=30KW 3-phase 50 Hz 6-poles 190V-200V D Max P1=26KW 3-phase 50 Hz 6-poles 190V-200V D Max P1=18,50KW 3-phase 60 Hz 6-poles 200V-220V D 380V Y P2=26kW/35hp	1	1		
79	384 54 30		Stator 27-26-6a 3-phase 60 Hz 6-poles 380V D P1=30KW 3-phase 60 Hz 6-poles 380V D P1=30KW 3-phase 60 Hz 6-poles 380V D P2=26kW/35hp	1	1		
79	384 54 34		Stator 27-26-6a 3-phase 50 Hz 6-poles 380V Y 220V D P2=22kW 3-phase 60 Hz 6-poles 440V-460V Y 260V D P1=30KW 3-phase 60 Hz 6-poles 440V-460V Y 260V D P1=30KW 3-phase 50 Hz 6-poles 380V Y 220V D P1=25KW 3-phase 50 Hz 6-poles 380V Y 220V D P1=18,20KW 3-phase 60 Hz 6-poles 440V-460V Y 260V D P2=26kW/35hp	1	1		
79	384 54 37		Stator 27-26-6a 3-phase 60 Hz 6-poles 440V-460V YSER 220V-230V Y// P2=30kW/ 40hp 3-phase 60 Hz 6-poles 440V-460V YSER 220V-230V Y// P1=30KW 3-phase 60 Hz 6-poles 440V-460V YSER 220V-230V Y// P1=30KW 3-phase 60 Hz 6-poles 440V-460V YSER 220V-230V Y// P2=26kW/ 35hp	1	1	1	1
79	384 54 38		Stator 27-26-6a 3-phase 50 Hz 6-poles 660V Y 380V D P2=22kW 3-phase 60 Hz 6-poles 440V-460V D P1=30KW 3-phase 60 Hz 6-poles 440V-460V D P1=30KW 3-phase 50 Hz 6-poles 660V Y 380V D P1=25KW 3-phase 50 Hz 6-poles 660V Y 380V D P1=18,20KW 3-phase 60 Hz 6-poles 440V-460V D P2=26kW/35hp	1	1	1	1

Pos. No	Part. No	Type	Denomination	Qty/Version			
				091	180	280	290
79	384 54 52		Stator 27-26-6a 3-phase 60 Hz 6-poles 575V-600V D P1=30KW	1	1		
			3-phase 60 Hz 6-poles 575V-600V D P1=30KW				
			3-phase 60 Hz 6-poles 575V-600V D P2=26kW/35hp				
79	384 54 40		Stator 27-26-6a 3-phase 50 Hz 6-poles 400V D P2=22kW	1	1	1	
			3-phase 60 Hz 6-poles 400V D P1=30KW				
			3-phase 60 Hz 6-poles 400V D P1=30KW				
			3-phase 50 Hz 6-poles 400V D P1=26KW				
			3-phase 50 Hz 6-poles 400V D P1=18,50KW				
			3-phase 60 Hz 6-poles 400V D P2=26kW/35hp				
79	384 54 44		Stator 27-26-6a 3-phase 50 Hz 6-poles 400V-440V D P2=22kW	1	1	1	1
			3-phase 60 Hz 6-poles 480V D P1=30KW				
			3-phase 60 Hz 6-poles 480V D P1=30KW				
			3-phase 50 Hz 6-poles 400V-440V D Max P1=26KW				
			3-phase 50 Hz 6-poles 400V-440V D Max P1=18,30KW				
			3-phase 60 Hz 6-poles 480V D P2=26kW/35hp				
79	384 54 50		Stator 27-26-6a 3-phase 50 Hz 6-poles 500V D P2=22kW	1	1	1	1
			3-phase 60 Hz 6-poles 575V D P1=30KW				
			3-phase 60 Hz 6-poles 575V D P1=30KW				
			3-phase 50 Hz 6-poles 500V D P1=26KW				
			3-phase 50 Hz 6-poles 500V D P1=18,50KW				
			3-phase 60 Hz 6-poles 575V D P2=26kW/35hp				
79	415 64 27		Stator 27-26-8a 3-phase 60 Hz 8-poles 200V-220V Y P2=22kW/30hp	1	1		
79	415 64 29		Stator 27-26-8a 3-phase 60 Hz 8-poles 380V Y 220V-230V D P2=22kW/30hp	1	1		
79	415 64 30		Stator 27-26-8a 3-phase 60Hz 8-poles 380V D P2=22kW/30hp	1	1		
79	415 64 37		Stator 27-26-8a 3-phase 60 Hz 8-poles 440V-460V YSER 220V-230V Y// P2=22kW/ 30hp	1	1		

Pos. No	Part. No	Type	Denomination	Qty/Version			
				091	180	280	290
79	415 64 38		Stator 27-26-8a 3-phase 60 Hz 8-poles 440V-460V D P2=22kW/30hp	1	1		
79	415 64 52		Stator 27-26-8a 3-phase 60 Hz 8-poles 575V-600V D P2=22kW/30hp	1	1		
79	384 54 02		Stator 27-26-6a 3-phase 50 Hz 6-poles 400V Y 230V D P2=22kW 3-phase 50 Hz 6-poles 400V Y 230V D P1=25KW 3-phase 50 Hz 6-poles 400V Y 230V D P1=18,30KW	1	1	1	1
79	384 54 39		Stator 27-26-6a 3-phase 50 Hz 6-poles 690V Y 400V D P2=22kW 3-phase 50 Hz 6-poles 690V Y 400V D P1=25KW 3-phase 50 Hz 6-poles 690V Y 400V D P1=18,20KW	1	1	1	1
79	384 54 01		Stator 27-26-6a 3-phase 50 Hz 6-poles 690V D P2=22kW 3-phase 50 Hz 6-poles 690V D P1=25KW 3-phase 50 Hz 6-poles 690V D P1=18,20KW	1	1	1	1
79	530 36 44		Stator 27-20-4f 3-phase 50 Hz 4-poles 400V-440V D P2=22kW Thermistor		1		
79	530 42 44		Stator 27-26-4a 3-phase 50 Hz 4-poles 400V-440V D P2=30kW Thermistor 3-phase 50 Hz 4-poles 400V-440V D Max P1=29KW Thermistor 3-phase 50 Hz 4-poles 400V-440V D P1=23KW Thermistor		1		
79	530 43 44		Stator 27-26-6a 3-phase 50 Hz 6-poles 400V-440V D P2=22kW 3-phase 50 Hz 6-poles 400V-440V D Max P1=26KW 3-phase 50 Hz 6-poles 400V-440V D Max P1=18,40KW		1	1	
79	570 33 44		Stator 27-22-2a 3-phase 50 Hz 2-poles 400V-440V D P2=30kW Thermistor		1		
79	415 74 34		Stator 27-20-4f 3-phase 50 Hz 4-poles 380V-400V Y 220V-230V D P2=22kW			1	1
79	415 74 38		Stator 27-20-4f 3-phase 50 Hz 4-poles 660V-690V Y 380V-400V D P2=22kW			1	1
79	415 74 40		Stator 27-20-4f 3-phase 50 Hz 4-poles 400V D P2=22kW			1	
79	415 74 44		Stator 27-20-4f 3-phase 50 Hz 4-poles 400V-440V D P2=22kW			1	1
79	415 74 50		Stator 27-20-4f Stator 3-phase 50 Hz 4-poles 500V D P2=22kW			1	1

Pos. No	Part. No	Type	Denomination	Qty/Version			
				091	180	280	290
79	384 50 28		Stator 27-26-4a 3-phase 50 Hz 4-poles 190V-200V D P2=30kW 3-phase 50 Hz 4-poles 190V-200V D Max P1=29KW 3-phase 50 Hz 4-poles 190V-200V D P1=23KW 3-phase 60 Hz 4-poles 200V-220V D 380V Y P2=35kW/47hp			1	1
79	384 50 30		Stator 27-26-4a 3-phase 60 Hz 4-poles 380V D P2=35kW/47hp			1	
79	384 50 34		Stator 27-26-4a 3-phase 50 Hz 4-poles 380V Y 220V D P2=30kW 3-phase 50 Hz 4-poles 380V Y 220V D P1=28KW 3-phase 50 Hz 4-poles 380V Y 220V D P1=23KW 3-phase 60 Hz 4-poles 440V-460V Y 260V D P2=35kW/47hp			1	1
79	384 50 52		Stator 27-26-4a 3-phase 60 Hz 4-poles 575V-600V D P2=35kW/47hp			1	1
79	384 54 28		Stator 27-26-6a 3-phase 50 Hz 6-poles 190V-200V D P2=22kW 3-phase 60 Hz 6-poles 200V-220V D 380V Y P1=30KW 3-phase 60 Hz 6-poles 200V-220V D 380V Y P1=30KW 3-phase 50 Hz 6-poles 190V-200V D Max P1=26KW 3-phase 50 Hz 6-poles 190V-200V D Max P1=18,50KW 3-phase 60 Hz 6-poles 200V-220V D 380V Y P2=26kW/35hp			1	1
79	384 54 30		Stator 27-26-6a 3-phase 60 Hz 6-poles 380V D P1=30KW 3-phase 60 Hz 6-poles 380V D P1=30KW 3-phase 60 Hz 6-poles 380V D P2=26kW/35hp			1	
79	384 54 34		Stator 27-26-6a 3-phase 50 Hz 6-poles 380V Y 220V D P2=22kW 3-phase 60 Hz 6-poles 440V-460V Y 260V D P1=30KW 3-phase 60 Hz 6-poles 440V-460V Y 260V D P1=30KW 3-phase 50 Hz 6-poles 380V Y 220V D P1=25KW 3-phase 50 Hz 6-poles 380V Y 220V D P1=18,20KW 3-phase 60 Hz 6-poles 440V-460V Y 260V D P2=26kW/35hp			1	1

Pos. No	Part. No	Type	Denomination	Qty/Version			
				091	180	280	290
79	384 54 52		Stator 27-26-6a 3-phase 60 Hz 6-poles 575V-600V D P1=30KW 3-phase 60 Hz 6-poles 575V-600V D P1=30KW 3-phase 60 Hz 6-poles 575V-600V D P2=26kW/35hp			1	1
79	384 50 01		Stator 27-26-4a 3-phase 50 Hz 4-poles 400V Y 230V D P2=30kW 3-phase 50 Hz 4-poles 400V Y 230V D P1=28KW 3-phase 50 Hz 4-poles 400V Y 230V D P1=23KW			1	1
79	384 50 39		Stator 27-26-4a 3-phase 50 Hz 4-poles 690V Y 400V D P2=30kW 3-phase 50 Hz 4-poles 690V Y 400V D P1=28KW 3-phase 50 Hz 4-poles 690V Y 400V D P1=23KW			1	1
81	563 92 00		Ring	1	1		
81	485 16 00		Protective disc	1	1	1	
82	384 83 04		Outer casing PAINTED	1	1		
82	416 47 00		Outer casing			1	1
83	82 75 05		O-ring 339.3X5.7 NBR	1	1		
83	82 75 23		O-ring 339.3X5.7 FPM		1		
83	82 75 23		O-ring 339.3X5.7 FPM			1	1
84	82 78 80		O-ring 375X8.4-1 NBR	1	1		
84	82 79 19		O-ring 375X8.4 FPM		1		
84	82 79 19		O-ring 375X8.4 FPM			1	1
89	279 76 02		Pipe	1	1		
89	279 76 12		Pipe			1	1
90	384 60 00		Pipe bend	1	1		
90	410 89 00		Pipe			1	1
91	83 02 73		Hex.socket hd screw M6X12-A4-70			2	2
92	374 81 03		Plate	1	1		
92	374 81 13		Plate			1	1
93	81 73 42		Slotted head screw M4X12-A4-70	2	2	2	2
96	384 99 00		Expanding plug unit	2	2		
96	384 99 01		Expanding plug unit			2	2
101	504 78 10		Cable unit (FLS)	1	1	1	1
102	504 78 03		Cable unit (FLS,CLS30)		1	1	
102	543 83 00		Cable unit (FLS,CLS30)		1	1	
103	518 89 02		Leakage detect.unit (FLS)	1	1	1	1
104	505 12 00		Leakage detect.unit (CLS30)		1	1	
105	503 16 07	(Ex)	Bearing holder EN	1			
105	503 16 06	(Ex)	Bearing holder FM	1			
105	503 16 04		Bearing holder FLS		1		
105	503 16 05		Bearing holder CLS FLS		1		

Pos. No	Part. No	Type	Denomination	Qty/Version			
				091	180	280	290
105	416 61 05		Bearing holder FLS			1	
105	416 61 06		Bearing holder CLS FLS			1	
105	416 61 02	(Ex)	Bearing holder				1
107	82 59 18		Retaining ring SGA 65	1	1	1	1
108	696 16 00		Supporting washer	2	2	2	2
109	83 30 23		Ball bearing	1	1	1	1
110	405 08 02	(Ex)	Bearing cover	1			1
110	405 08 04		Bearing cover		1	1	
112	81 41 34		Hexagon head screw M10X40-A2-70	4	4	4	4
114	683 14 31		Mechanical seal WCCR/WCCR	1	1		
114	683 14 31		Mechanical seal WCCR/WCCR		1	1	
114	683 14 31		Mechanical seal WCCR/WCCR		1		1
115	584 72 00		Lock washer	1	1		
116	82 00 11		Hex.socket hd screw M6X12-A2-70	1	1		
120	428 22 17		Inspection screw BRASS	1	2		
120	385 67 00		Inspection screw	1			
120	428 22 05		Inspection screw A4			2	1
121	82 70 34		Plug	1			
121	82 70 45		Plug		1		
121	82 70 34		Plug		1		
121	82 70 45		Plug			1	1
122	82 73 90		O-ring 19.2X3 NBR	1			
122	82 77 30		O-ring 28.17X3.53-1 NBR	1			
122	82 73 93		O-ring 26.2X3 NBR	1			
122	82 72 95		O-ring 19.2X3 FPM		2		
122	82 79 22		O-ring 28.17X3.53 FPM		1		
122	82 73 90		O-ring 19.2X3 NBR		2		
122	82 77 30		O-ring 28.17X3.53-1 NBR		1		
122	82 72 95		O-ring 19.2X3 FPM			2	1
122	82 79 22		O-ring 28.17X3.53 FPM			1	1
124	82 48 68		Spring washer DIN 128-A-16-A2	1			
125	82 69 42		Protective plug	1			
129	620 77 00		Oil housing bottom	1	1		
129	416 67 00		Oil housing			1	1
130	82 75 08		O-ring 399.3X5.7 NBR	1			
130	82 80 93		O-ring 399.3X5.7 FPM		1		
130	82 75 08		O-ring 399.3X5.7 NBR		1		
130	82 80 93		O-ring 399.3X5.7 FPM			1	1
131	82 75 09		O-ring 419.3X5.7 NBR	1			
131	82 81 12		O-ring 419.3X5.7 FPM		1		
131	82 75 09		O-ring 419.3X5.7 NBR		1		
131	82 81 12		O-ring 419.3X5.7 FPM			1	1
132	646 59 00		Gasket compl.	1	1		
132	646 59 01		Gasket compl.			1	1



Pos. No	Part. No	Type	Denomination	Qty/Version			
				091	180	280	290
133	82 00 53		Hex.socket hd screw M10X35-A2-70	2	2		
133	83 04 56		Hex.socket hd screw M10X35-A4-80			2	2
134	319 20 01		Washer	1	1		
134	319 20 01		Washer			1	
134	319 20 01		Washer				1
135	306 73 00		Screw with barrel	6	6		
135	306 73 01		Screw with barrel			6	6
136	302 21 00		Compression spring	6	6	6	6
137	382 83 00		Wear protection NBR-A2	1			
137	382 83 03		Wear protect.compl. FPM-A4		1	1	
137	382 83 00		Wear protection NBR-A2		1		
137	382 83 03		Wear protect.compl. FPM-A4				1
140	80 23 05		Parallel pin CP-H8-4X10-1650	1	1		
140	80 30 05		Parallel pin CP-H8-4X10-2346			1	1
141	384 03 10		Mechanical seal WCCR/WCCR	1	1		
141	384 03 10		Mechanical seal WCCR/WCCR		1	1	
141	384 03 10		Mechanical seal WCCR/WCCR		1		1
141	384 03 12		Mechanical seal			1	
141	384 03 12		Mechanical seal				1
143	396 41 01		Seal ring FPM			1	1
145	82 01 09		Hex.socket hd screw M16X60-A2-70	8	8		
145	83 04 58		Hex.socket hd screw M16X60-A4-80			8	8
146	82 35 23		Plain washer 16-A2-A-170	8	8		
146	82 35 78		Plain washer 16-A4-A-170			8	8
148	80 46 27		Parallel key 14H9X9H11X70	1	1		
148	80 70 69		Parallel key 10H9X8H11X45	1	1		
148	80 78 77		Parallel key 14H9X9H11X70-A4			1	1
264	82 40 82		Plain washer (32)-34 MM	4	8		
264	82 40 82		Plain washer (32)-34 MM	8	8		
264	82 40 69		Plain washer (33)-35 MM	4			
264	82 40 69		Plain washer (33)-35 MM	8			
264	82 40 82		Plain washer (32)-34 MM	8	4		
264	82 40 81		Plain washer (30)-32 MM		8		
264	82 40 69		Plain washer (33)-35 MM		8		
264	82 40 81		Plain washer (30)-32 MM		4		
264	82 40 69		Plain washer (33)-35 MM		4		
264	82 40 71		Plain washer (37)-39 MM		4		
264	82 40 73		Plain washer 44.5X52X2-A2-70		4		
264	82 42 72		Plain washer (32)-34 MM			8	
264	82 42 71		Plain washer (30)-32 MM			4	

Pos. No	Part. No	Type	Denomination	Qty/Version			
				091	180	280	290
264	82 42 72		Plain washer (32)-34 MM			4	
264	82 42 73		Plain washer (32)-35 MM			2	
264	82 42 71		Plain washer (30)-32 MM			8	
264	82 42 72		Plain washer (32)-34 MM				4
265	84 18 03		Seal sleeve (23)-26 MM	2		4	
265	84 18 02		Seal sleeve (20)-23 MM	4			
265	84 18 03		Seal sleeve (23)-26 MM	4	4		
265	84 18 02		Seal sleeve (20)-23 MM	2			
265	84 18 04		Seal sleeve (26)-29 MM	2	4		
265	84 18 05		Seal sleeve (29)-32 MM	2	4		
265	84 18 06		Seal sleeve (32)-35 MM	2			
265	84 18 06		Seal sleeve (32)-35 MM	4			
265	84 18 03		Seal sleeve (23)-26 MM	4	2		
265	84 18 04		Seal sleeve (26)-29 MM	4	2		
265	84 18 00		Seal sleeve (14)-17 MM		4		
265	84 18 01		Seal sleeve (17)-20 MM		4		
265	84 18 02		Seal sleeve (20)-23 MM		4		
265	84 18 06		Seal sleeve (32)-35 MM		4		
265	84 18 01		Seal sleeve (17)-20 MM		2		
265	84 18 02		Seal sleeve (20)-23 MM		2		
265	84 18 04		Seal sleeve (26)-29 MM		2	2	
265	84 18 05		Seal sleeve (29)-32 MM		2		
265	84 18 06		Seal sleeve (32)-35 MM		2		
265	84 18 07		Seal sleeve (36)-38 MM		2		
265	84 18 08		Seal sleeve (38)-41 MM		2		
265	84 18 01		Seal sleeve (17)-20 MM			2	
265	84 18 05		Seal sleeve (29)-32 MM			2	
265	84 18 06		Seal sleeve (32)-35 MM			2	
265	84 18 03		Seal sleeve (23)-26 MM			2	
265	84 18 00		Seal sleeve (14)-17 MM			4	
265	84 18 02		Seal sleeve (20)-23 MM				2
265	84 18 03		Seal sleeve (23)-26 MM				2
265	84 18 04		Seal sleeve (26)-29 MM				2
265	84 18 05		Seal sleeve (29)-32 MM				2
266	597 98 02		Sleeve	1	2	2	
266	597 98 02		Sleeve	2	2		
266	597 98 02		Sleeve	1	1		
266	597 98 02		Sleeve	2		1	
266	597 98 02		Sleeve	2	1		
266	597 98 02		Sleeve		1	1	
266	597 98 02		Sleeve			2	
266	597 98 02		Sleeve				1
912	82 73 90		O-ring 19.2X3 NBR	2			
912	82 77 30		O-ring 28.17X3.53-1 NBR	2			

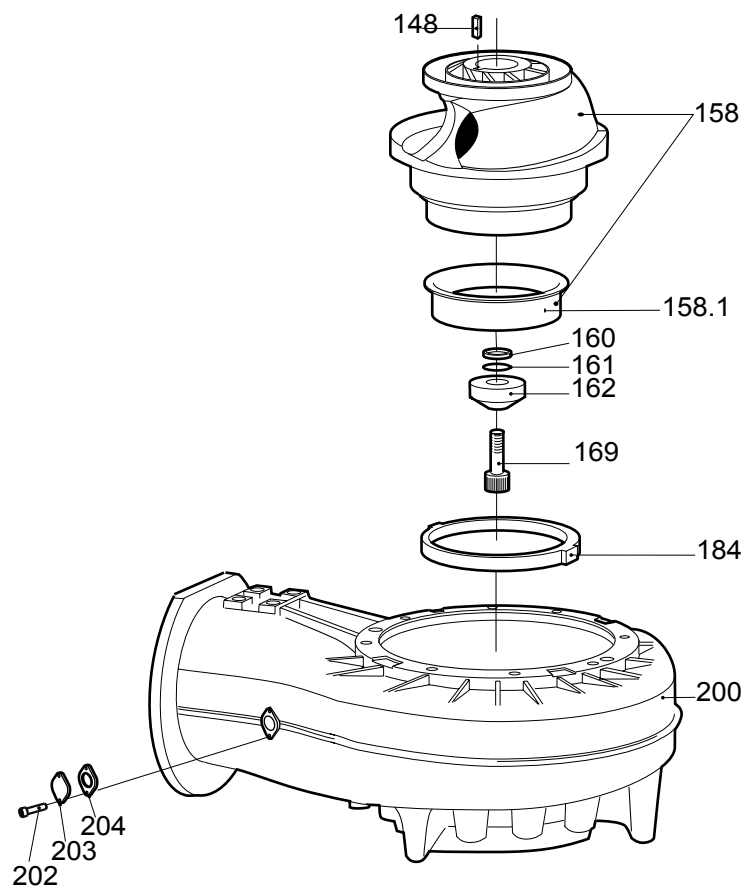
Pos. No	Part. No	Type	Denomination	Qty/Version			
				091	180	280	290
912	82 73 93		O-ring 26.2X3 NBR	2			
912	82 72 95		O-ring 19.2X3 FPM		4		
912	82 79 22		O-ring 28.17X3.53 FPM		2		
912	82 73 90		O-ring 19.2X3 NBR		4		
912	82 77 30		O-ring 28.17X3.53-1 NBR		2		
912	82 72 95		O-ring 19.2X3 FPM			4	2
912	82 79 22		O-ring 28.17X3.53 FPM			2	2

# 4 Hydraulic Unit

## 4.1 C\_LT

Curve: 624 – 629, 821 – 825

C\_3201 LT

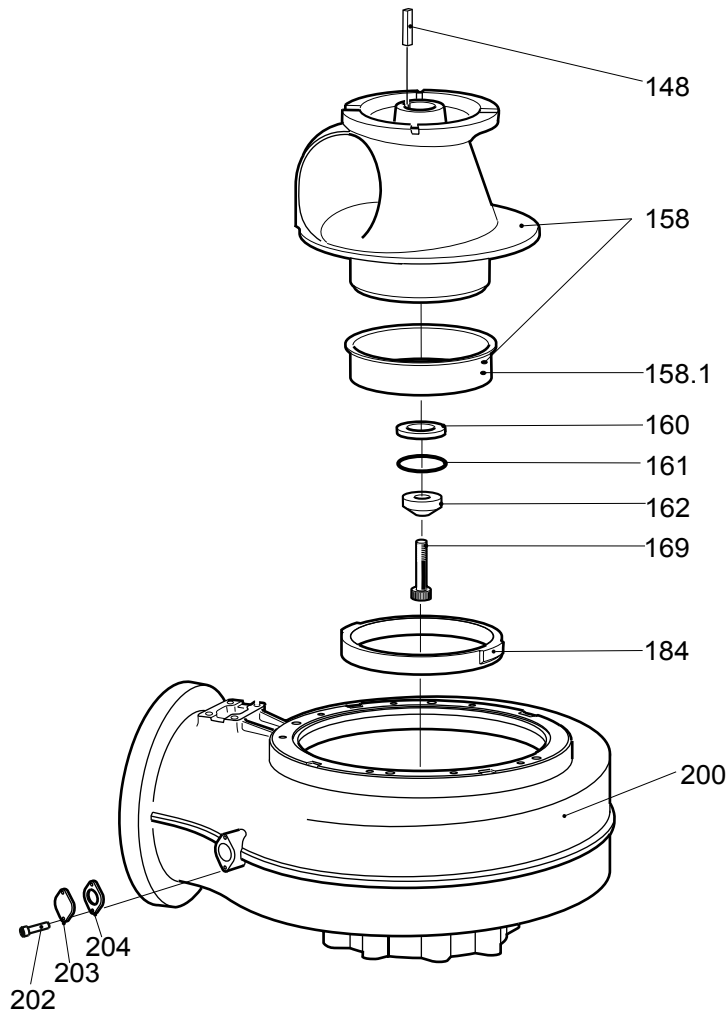


30352

## 4.2 C\_ MT

MT, curve: 630, 632, 634 – 639

C\_ 3201 MT

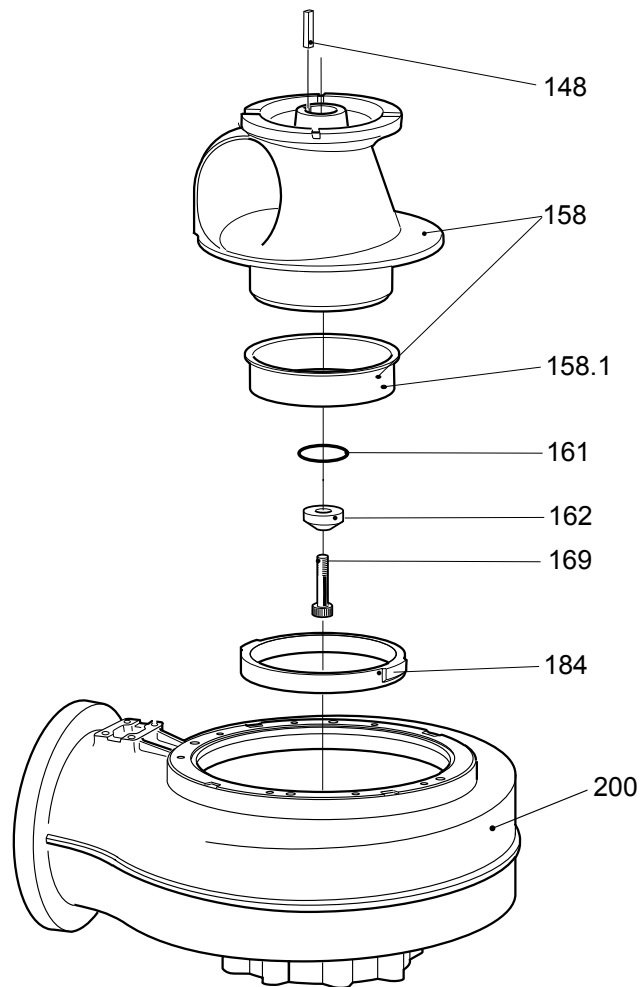


30346

## 4.3 C\_MT

MT, curve: 635 – 637

C\_ 3201.280/290 MT

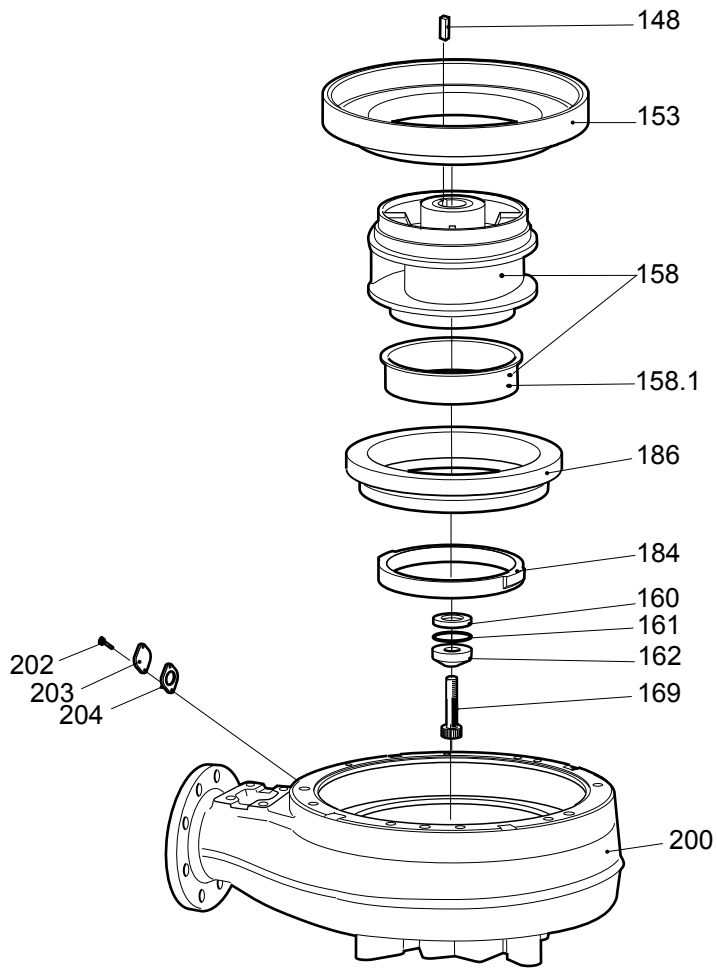


30402

## 4.4 C\_HT

50/60Hz, curve: 450, 452, 455 – 458

C\_3201 HT

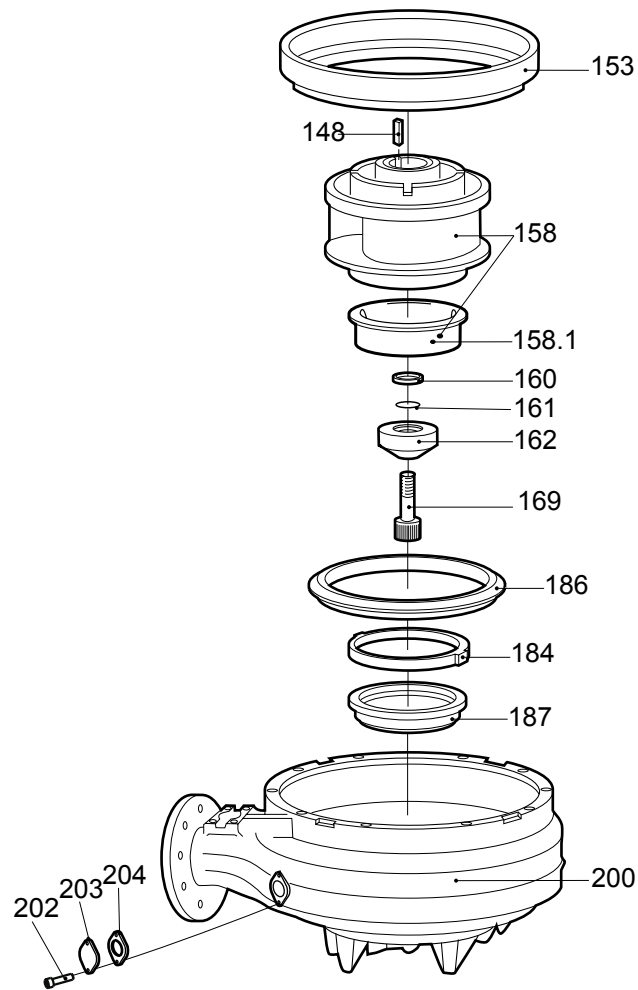


30344

## 4.5 C\_HT

60Hz, curve: 454

C\_3201 HT (60 Hz)



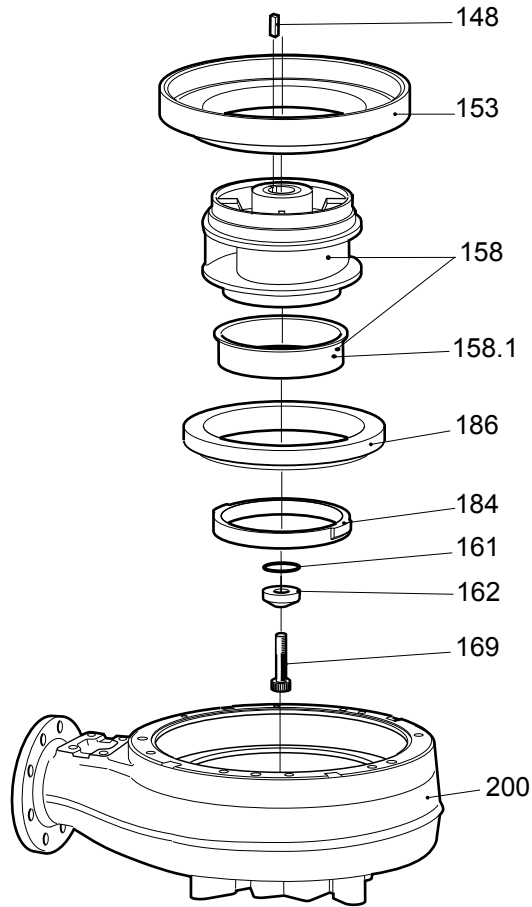
30348



## 4.6 C\_HT

Curve: 452, 456, 652, 656

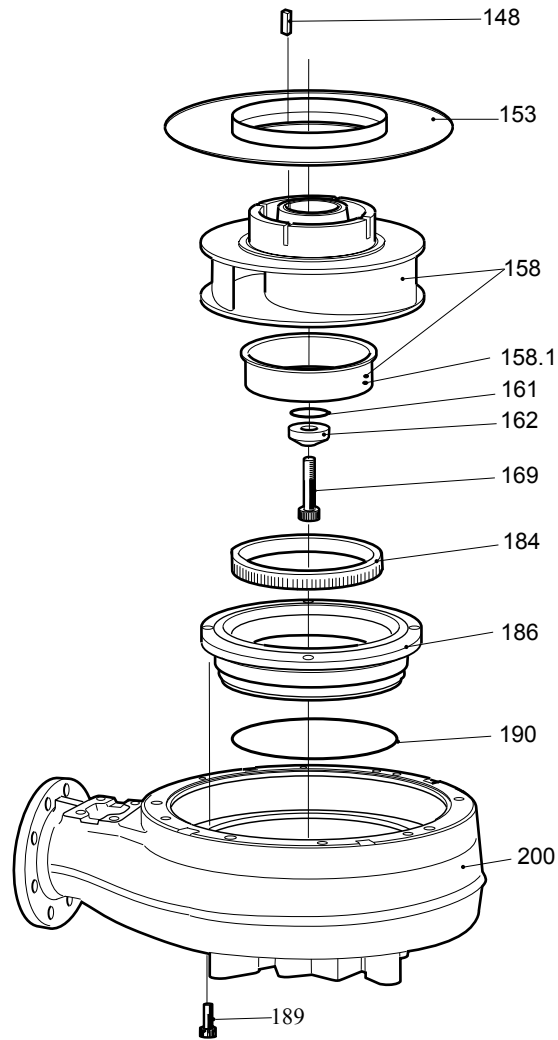
C\_3201.280/290 HT



30404

Curve: 460, 462, 660, 662

C\_3201.280/290 HT

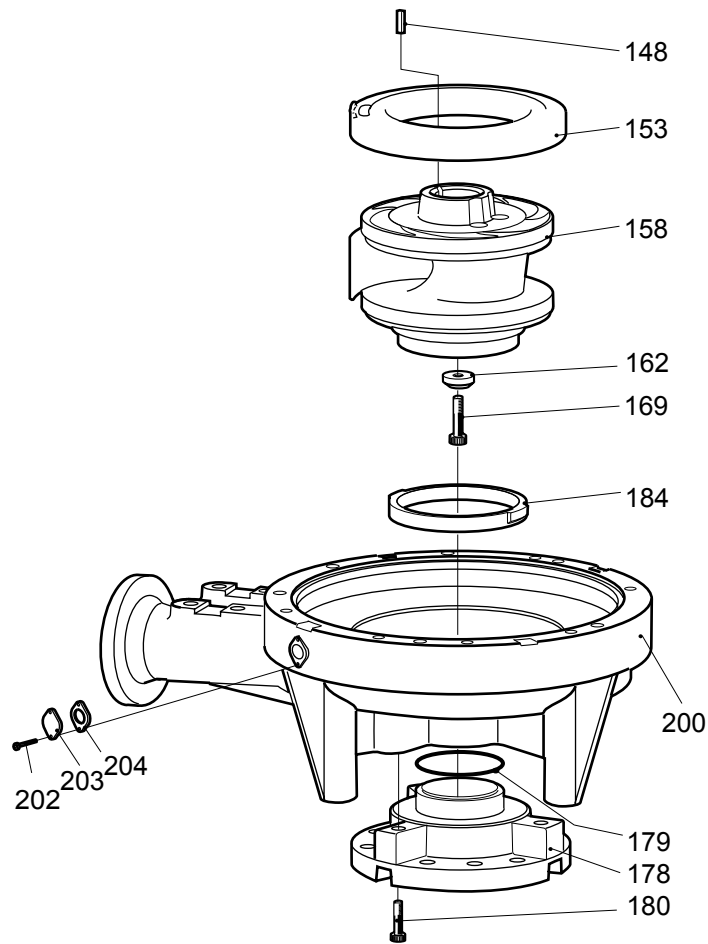


30406

## 4.7 C\_SH

Curve: 263 - 265

C\_3201 SH

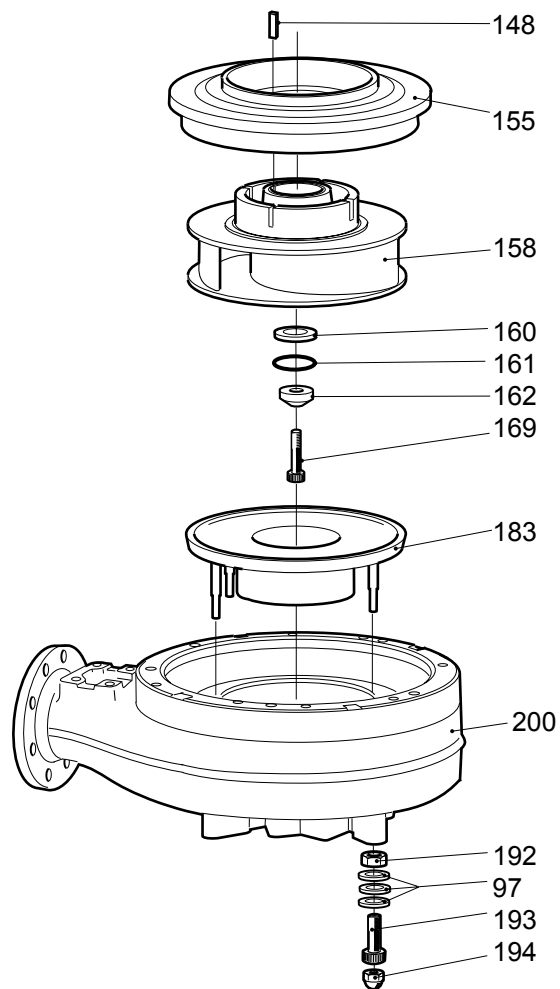


30350

## 4.8 H\_ HT-HD

Curve: 460 – 462

H\_ 3201 HT-HD

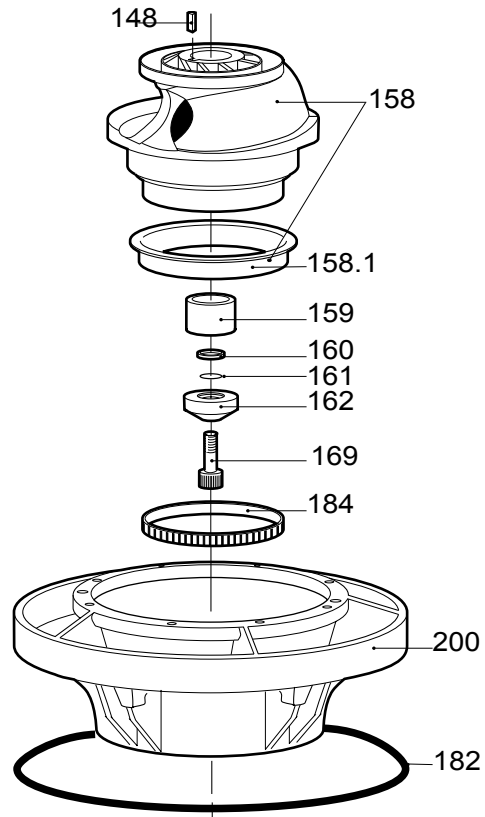


30343

## 4.9 LL LT

Curve: 621 - 629, 821 - 829

### LL 3201 LT



30354

## 4.10 3201.091/180/280/290

Pos. No	Part. No	Type	Denomination	Qty/Version				
				091	180	280	290	
153	384 98 00		Ring	Impeller HT 50Hz 3-phase	1	1		
				Impeller HT 60Hz 3-phase				
153	384 98 02		Ring	Impeller HT 60Hz 3-phase	1	1		
153	384 98 01		Ring	Impeller HT 50Hz 3-phase	1	1		
				Impeller HT 60Hz 3-phase				
153	562 64 00		Insert ring	SH 50Hz	1	1		
153	429 77 00		Ring	Pump housing HT C DN 150 Drilled acc. to: EN 1092-2 tab. 9 ANSI B16.1-89; tab.5			1	1
				Pump housing HT C DN 150 Undrilled				
153	429 79 00		Wear protection	Pump housing HT C DN 150 Drilled acc. to: EN 1092-2 tab. 9 ANSI B16.1-89; tab.5			1	1
158	601 64 01		Impeller	821 LT 60Hz	1	1		
158,1	345 25 00		Wear ring		1	1		
158	601 64 03		Impeller	822 LT 60Hz	1	1		
158,1	345 25 00		Wear ring		1	1		
158	601 64 06		Impeller	823 LT 60Hz	1	1		
158	601 64 10		Impeller	624 LT 50Hz	1	1		
				624 LT 60Hz				
158	601 64 13		Impeller	625 LT 50Hz	1	1		
				625 LT 60Hz				
158	601 64 17		Impeller	626 LT 50Hz	1	1		
158	601 64 21		Impeller	627 LT 50Hz	1	1		
158	601 64 23		Impeller	628 LT 50Hz	1	1		
158	601 64 26		Impeller	629 LT 50Hz	1	1		
158	384 31 00		Impeller unit	630 MT 50Hz	1	1		
158,1	345 25 04		Wear ring		1	1		
158	384 32 00		Impeller unit	632 MT 50Hz	1	1		
				632 MT 60Hz				
158,1	345 25 04		Wear ring		1	1		
158	384 33 00		Impeller unit	634 MT 50Hz	1	1		
				634 MT 60Hz				
158,1	345 25 04		Wear ring		1	1		
158	398 88 09		Impeller unit	635 MT 50Hz	1	1		
				635 MT 60Hz				
158,1	345 25 04		Wear ring		1	1		
158	398 88 06		Impeller unit	636 MT 50Hz	1	1		
				636 MT 60Hz				
158,1	345 25 04		Wear ring		1	1		
158	398 88 07		Impeller unit	637 MT 50Hz	1	1		
				637 MT 60Hz				
158,1	345 25 04		Wear ring		1	1		

Pos. No	Part. No	Type	Denomination	Qty/Version			
				091	180	280	290
158	398 88 08		Impeller unit 638 MT 50Hz 638 MT 60Hz	1	1		
158,1	345 25 04		Wear ring	1	1		
158	398 88 35		Impeller	1	1		
158	384 26 00		Impeller unit	1	1		
158,1	345 25 05		Wear ring	1	1		
158	384 27 00		Impeller unit	1	1		
158,1	345 25 05		Wear ring	1	1		
158	381 08 01		Impeller unit	1	1		
158,1	345 25 06		Wear ring	1	1		
158	412 38 00		Impeller unit	1	1		
158,1	345 25 05		Wear ring	1	1		
158	384 29 00		Impeller unit	1	1		
158,1	345 25 05		Wear ring	1	1		
158	384 35 00		Impeller unit	1	1		
158,1	345 25 05		Wear ring	1	1		
158	412 37 00		Impeller unit	1	1		
158,1	345 25 05		Wear ring	1	1		
158	562 45 11		Impeller	1	1		
158	562 45 12		Impeller	1	1		
158	562 45 13		Impeller	1	1		
158	384 77 80		Impeller	1	1		
158	384 78 80		Impeller	1	1		
158	384 78 90		Impeller	1	1		
158,1	457 79 08		Wear ring	1	1		
158	398 88 25		Impeller unit			1	1
158,1	345 25 14		Wear ring			1	1
158	398 88 26		Impeller unit			1	1
158,1	345 25 14		Wear ring			1	1
158	398 88 27		Impeller unit			1	1
158,1	345 25 14		Wear ring			1	1
158	429 81 00		Impeller unit			1	1
158,1	345 25 15		Wear ring			1	1
158	429 82 00		Impeller unit			1	1
158,1	345 25 15		Wear ring			1	1
158	384 77 80		Impeller			1	1
158,1	457 79 08		Wear ring			1	1

Pos. No	Part. No	Type	Denomination	Qty/Version			
				091	180	280	290
158	384 78 80		Impeller 462 662 HT 50Hz 462 662 HT 60Hz			1	1
158,1	457 79 08		Wear ring			1	1
159	437 85 00		Sleeve	1	1		
160	384 79 00		Gasket	1	1		
161	82 74 65		O-ring 59.5X3 NBR	1			
161	82 80 90		O-ring 59.5X3 FPM		1		
			Shaft unit for motor 27-26-4				
			Shaft unit for motor 27-26-6				
			Shaft unit for motor 27-26-8				
161	82 74 65		O-ring 59.5X3 NBR		1		
			Shaft unit for motor 27-20-4				
			Shaft unit for motor 27-26-8				
			Shaft unit for motor 27-26-4				
			Shaft unit for motor 27-26-6				
			Shaft unit for motor 27-22-2				
161	82 80 90		O-ring 59.5X3 FPM			1	1
162	384 61 00		Supporting washer	1	1		
			LT				
			MT				
			HT				
162	381 62 00		Supporting washer	1	1		
			SH				
162	384 61 01		Supporting washer			1	1
169	82 01 14		Hex.socket hd screw M16X90-A2-70	1	1		
			LT				
169	82 01 09		Hex.socket hd screw M16X60-A2-70	1	1		
			MT				
			HT				
169	84 42 58		Hex.socket hd screw MC6S 12X60-2343	1	1		
			SH				
169	83 04 58		Hex.socket hd screw M16X60-A4-80			1	1
178	562 46 00		Bell mouth	1	1		
179	82 74 12		O-ring 99.1X5.7 NBR	1	1		
180	82 01 13		Hex.socket hd screw M16X80-A2-70	3	3		
182	82 83 43		G-ring D=617; T=16	1	1		
184	319 32 00		Wear ring compl.	1	1		
			Material: NBR Pressure class: LT				
184	314 88 10		Ring	1	1		
			Material: Bronze Pressure class: MT				
184	384 63 00		Wear ring compl.	1	1		
			Material: NBR Pressure class: MT				
184	314 88 06		Ring	1	1		
			Material: Bronze Pressure class: MT				
184	309 29 00		Wear ring	1	1		
			Material: NBR Pressure class: HT				
184	314 88 02		Ring	1	1		
			Material: Bronze Pressure class: HT				
184	303 66 00		Wear ring	1	1		
			Material: NBR Pressure class: HT				
184	314 88 01		Ring	1	1		
			Material: Bronze Pressure class: MT				
184	314 88 04		Ring	1	1		
			Material: Bronze Pressure class: SH				
184	309 34 00		Wear ring	1	1		
			Material: NBR Pressure class: SH				
184	384 63 02		Wear ring compl.			1	1
			MT Undrilled				
			MT Drilled acc. to: EN 1092-2 tab. 8 ANSI B16.1-89; tab.5				
184	309 29 02		Wear ring			1	1
			HT Drilled acc. to: EN 1092-2 tab. 9 ANSI B16.1-89; tab.5				
			HT Undrilled				



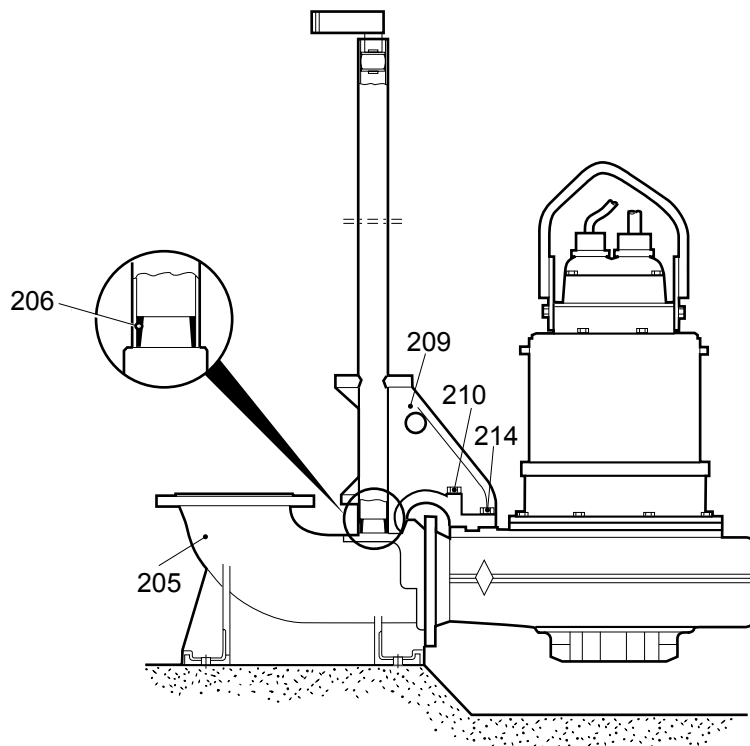
Pos. No	Part. No	Type	Denomination	Qty/Version			
				091	180	280	290
184	314 88 28		Ring HT Drilled acc. to: EN 1092-2 tab. 9 ANSI B16.1-89; tab.5			1	1
186	384 97 01		Ring HT 50Hz	1	1		
186	384 97 00		Ring HT 50Hz	1	1		
186	414 42 00		Ring HT 60Hz	1	1		
186	569 57 00		Insert ring HT Drilled acc. to: EN 1092-2 tab. 9 ANSI B16.1-89; tab.5			1	1
186	429 78 00		Ring HT 50Hz HT 60Hz			1	1
187	414 41 00		Ring	1	1		
189	83 03 26		Hex.socket hd screw M10X40-A4-70			4	4
190	82 75 16		O-ring 144.3X5.7 FPM			1	1
200	437 90 20		Pump housing Pump housing Prepared for Flush valve LT C DN 300 Installation: P Undrilled	1	1		
200	384 24 19		Pump housing MT C N DN 200 Installation: P Undrilled	1	1		
200	412 11 22		Pump housing HT C DN 150 Installation: P Undrilled	1	1		
200	562 44 20		Pump housing SH C DN 100 Installation: P Undrilled	1	1		
200	437 90 00		Pump housing LT C DN 300 Undrilled	1	1		
200	437 90 01		Pump housing LT C DN 300 Drilled acc. to: EN 1092-2 tab. 8	1	1		
200	437 90 05		Pump housing LT C DN 300 Drilled acc. to: ANSI B16.1-89;tabl.5	1	1		
200	437 90 07		Pump housing LT C DN 300 Drilled acc. to: EN 1092-2 tab. 9	1	1		
200	384 24 00		Pump housing MT C N DN 200 Undrilled	1	1		
200	384 24 06		Pump housing MT C N DN 200 Drilled acc. to: EN 1092-2 tab. 8 ANSI B16.1-89;tabl.5	1	1		
200	384 24 07		Pump housing MT C N DN 200 Drilled acc. to: EN 1092-2 tab. 9	1	1		
200	412 11 00		Pump housing HT C DN 150 Undrilled	1	1		
200	412 11 06		Pump housing HT C DN 150 Drilled acc. to: EN 1092-2 tab. 9 ANSI B16.1-89; tab.5	1	1		
200	562 44 00		Pump housing SH C DN 100 Bell mouth	1	1		
200	562 44 01		Pump housing SH C DN 100 Drilled acc. to: EN 1092-2 tab. 9 Bell mouth	1	1		
200	542 91 00		Diffuser uncoated LT L Column pipe DN 800 Installation: L	1	1		
200	416 50 00		Pump housing MT C DN 200 Undrilled			1	1
200	416 50 06		Pump housing MT C DN 200 Drilled acc. to: EN 1092-2 tab. 8 ANSI B16.1-89; tab.5			1	1
200	416 51 00		Pump housing HT C DN 150 Undrilled			1	1
200	416 51 06		Pump housing HT C DN 150 Drilled acc. to: EN 1092-2 tab. 9 ANSI B16.1-89; tab.5			1	1
200	416 51 16		Pump housing HT C DN 150 Drilled acc. to: EN 1092-2 tab. 9 ANSI B16.1-89; tab.5			1	1

Pos. No	Part. No	Type	Denomination	Qty/Version			
				091	180	280	290
202	82 00 51		Hex.socket hd screw M10X25-A2-70	2	2		
203	433 56 00		Cover	1	1		
204	647 99 00		Gasket	1	1		

# 5 Installation Components

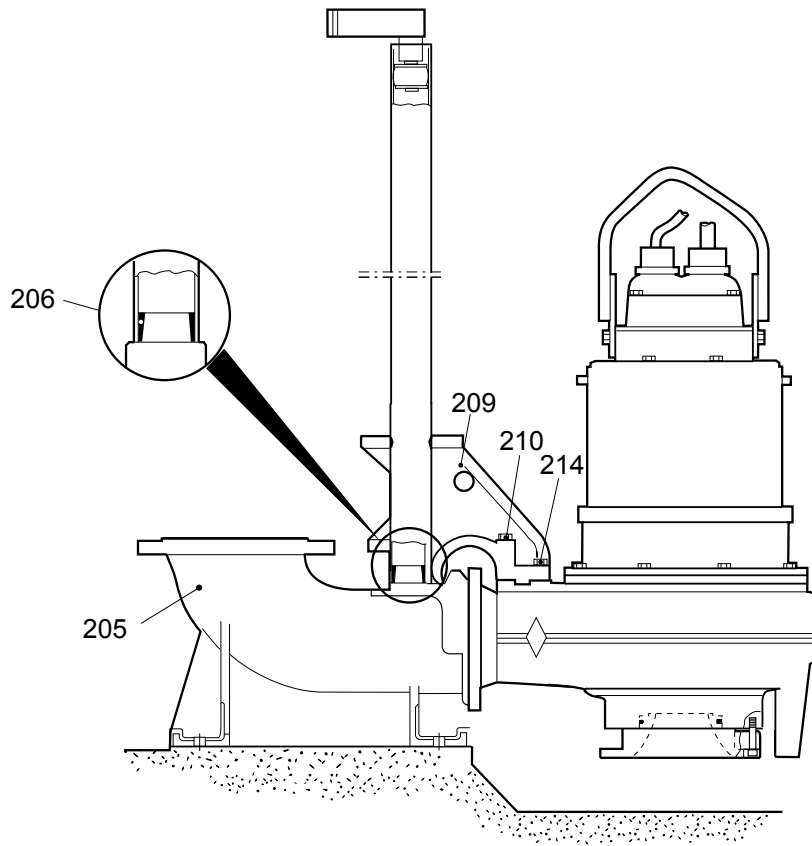
## 5.1 CP

CP 3201.091/180



30382

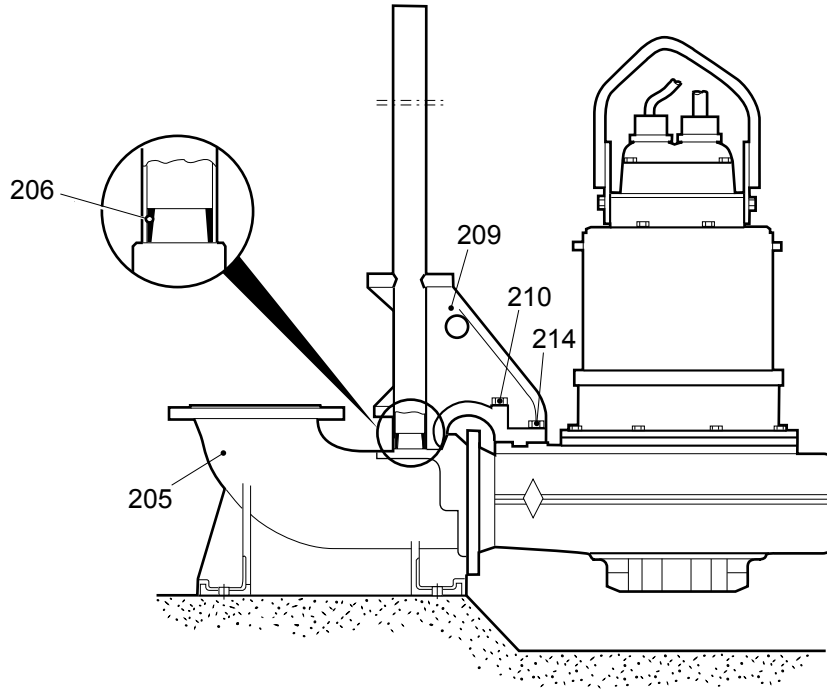
## CP 3201.091/180 SH



30385

## 5.2 CP

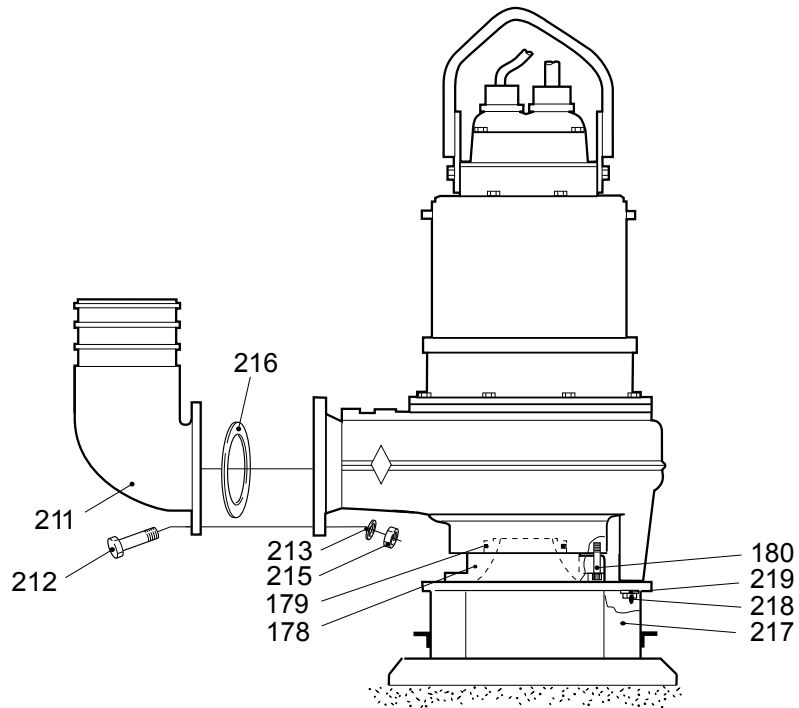
### CP 3201.280/290



30399

## 5.3 CS

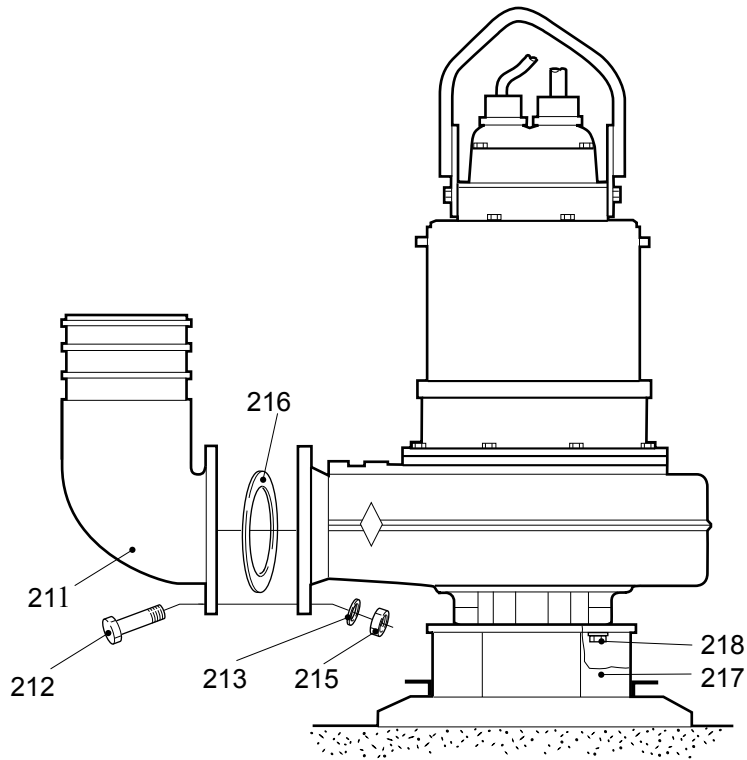
CS 3201.091/180 SH



30386

## 5.4 CS

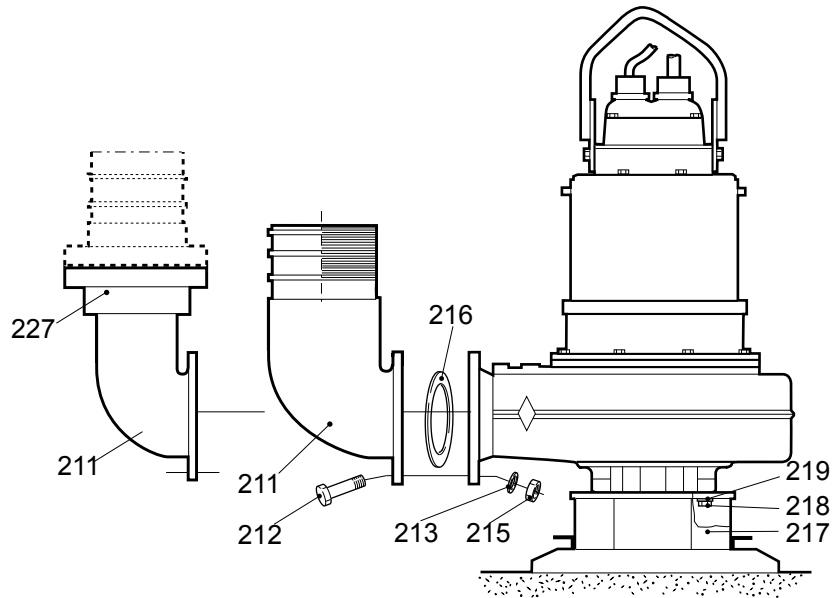
CS 3201.280/290



30400

## 5.5 CS/HS

CS/HS 3201.091/180

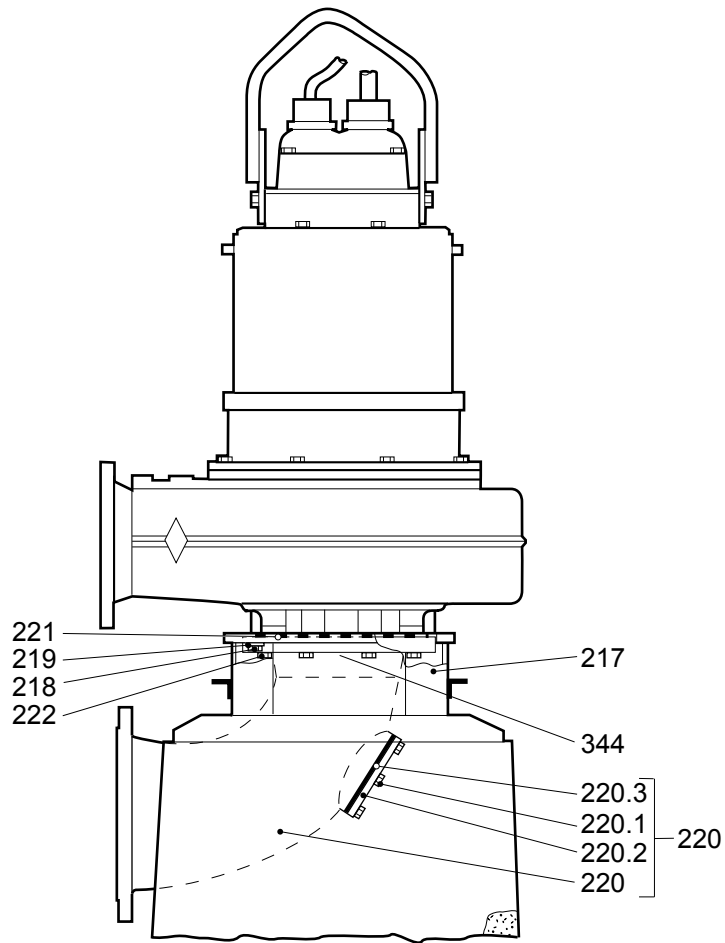


30383



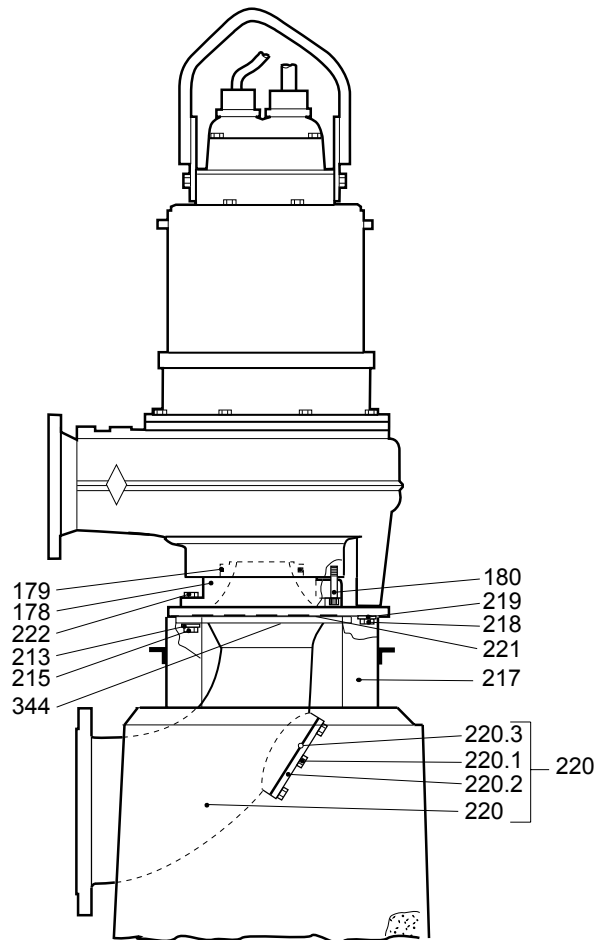
## 5.6 CT

CT 3201.091/180



30384B

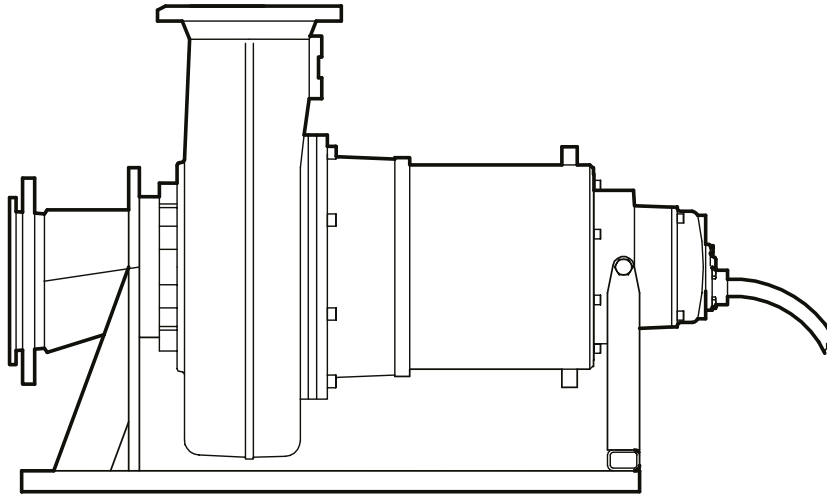
## CT 3201.091/180 SH



30387A

## 5.7 CZ

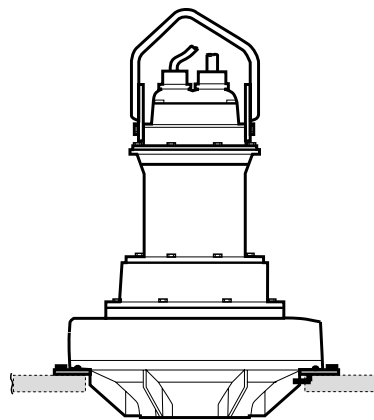
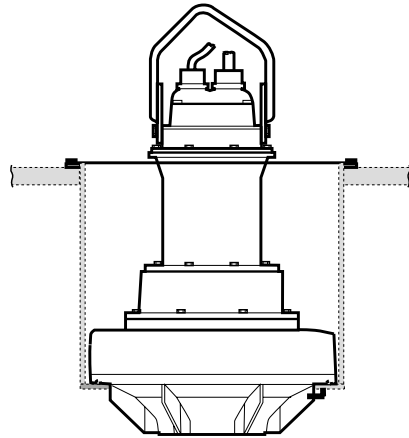
CZ 3201.180



30572

## 5.8 LL

LL 3201.091/180



30388

## 5.9 3201.091/180/280/290

Pos. No	Part. No	Denomination	Qty/Version			
			091	180	280	290
205	320 15 00	Discharge con.stat. IN/OUT 300/350MM Installation P LT DN 350	1	1		
205	320 15 01	Discharge con.stat. IN/OUT 300/350MM Installation P LT Drilled according to : EN 1092-2 tab. 8 DN 350	1	1		
205	320 15 05	Discharge con.stat. IN/OUT 300/350MM Installation P LT Drilled according to : ANSI B16.1-89 DN 350	1	1		
205	320 15 07	Discharge con.stat. IN/OUT 300/350MM Installation P LT Drilled according to : EN 1092-2 tab. 9 DN 350	1	1		
205	604 61 00	Discharge con.stat. "LT" LOW HEAD DN 300 Installation P LT DN 300	1			
205	604 61 01	Discharge con.stat. "LT" LOW HEAD DN 300 Installation P LT Drilled according to : EN 1092-2 tab. 8 DN 300	1			
205	604 61 05	Discharge con.stat. "LT" LOW HEAD DN 300 Installation P LT Drilled according to : ANSI B16.1-89 DN 300	1			
205	604 61 07	Discharge con.stat. "LT" LOW HEAD DN 300 Installation P LT Drilled according to : EN 1092-2 tab. 9 DN 300	1			
205	374 76 06	Discharge con.stat. IN/OUT 200/200MM Option		1		
205	416 52 00	Discharge connection IN/OUT 200/250MM Installation P MT DN 250			1	
205	416 52 01	Discharge connection IN/OUT 200/250MM Installation P MT Drilled according to : EN 1092-2 tab. 8 DN 250			1	
205	416 52 05	Discharge connection IN/OUT 200/250MM Installation P MT Drilled according to : ANSI B16.1-89 DN 250			1	
206	255 47 01	Ring	2	2		
206	255 47 03	Ring			2	
209	305 79 00	Sliding bracket	1	1		
209	416 54 00	Sliding bracket			1	1
210	84 34 37	Hexagon head screw M20X110-A2-70	2	2		
210	81 49 65	Hexagon head screw M20X110-A4-70			2	2
211	457 68 00	Discharge connection "LT" LOW HEAD DN 300 Installation S LT	1	1		
211	281 79 00	Discharge connection Installation S MT	1	1		
211	295 57 00	Discharge connection Installation S HT	1	1		
211	259 82 04	Discharge connection Installation S SH	1	1		
211	309 31 01	Discharge connection Installation S HT Thread : ISO G6A Outer Quick coupling: Quick Coupling DN 150		1		
211	429 69 00	Discharge connection Installation S MT			1	1
211	429 70 00	Discharge connection Installation S HT			1	1
212	84 34 34	Hexagon head screw M20X80-A2-70	8	8		
212	84 34 32	Hexagon head screw M20X70-A2-70	8	8		
212	84 34 07	Hexagon head screw M16X60-A2-70	4	4		
212	81 49 60	Hexagon head screw M20X70-A4-70			8	8
213	82 35 26	Plain washer 20-A2-A-170	8	8		
213	82 35 23	Plain washer 16-A2-A-170	4	4		
213	82 35 79	Plain washer 20-A4-A-170			8	8
214	84 34 30	Hexagon head screw M20X60-A2-70	2	2		
214	81 49 58	Hexagon head screw M20X60-A4-70			2	2

Pos. No	Part. No	Denomination	Qty/Version			
			091	180	280	290
215	82 23 62	Hexagon nut M20-A2-70	8	8		
215	82 23 61	Hexagon nut M16-A2-70	4	4		
215	82 23 38	Hexagon nut M20-A4-70			8	8
216	380 25 01	Gasket 370 MM	1	1		
216	283 19 00	Gasket 8"	1	1		
216	295 64 00	Gasket 6"	1	1		
216	259 83 00	Gasket 4"	1	1		
216	283 19 01	Gasket			1	1
216	295 64 01	Gasket			1	1
217	437 88 01	Stand compl. S/T INSTALLATION	1	1		
217	380 92 00	Stand compl.	1	1		
217	429 71 00	Stand compl.			1	1
217	380 92 00	Stand compl.			1	1
218	84 34 04	Hexagon head screw M16X45-A2-70	4	4		
218	84 34 03	Hexagon head screw M16X40-A2-70	4	4		
218	81 41 81	Hexagon head screw M16X40-A4-70			4	4
219	82 35 23	Plain washer 16-A2-A-170	4	4		
220	320 06 01	Suction pipe unit	1	1		
220	320 06 05	Suction pipe unit	1	1		
220	320 06 07	Suction pipe unit	1	1		
220	381 77 01	Suction pipe unit DN250 (10") MEDIUM HEAD	1	1		
	220,1 81 41 56	Hexagon head screw M12X35-A2-70	4	4		
	220,2 274 45 01	Cleaning door	1	1		
	220,3 274 48 00	Gasket	1	1		
220	381 77 05	Suction pipe unit DN250 (10") MEDIUM HEAD	1	1		
220	381 77 07	Suction pipe unit DN250 (10") MEDIUM HEAD	1	1		
220	272 82 06	Suction pipe unit DN200 (8") HIGH HEAD"HT"	1	1		
	220,1 81 52 49	Hexagon head screw	4	4		
	220,2 274 45 00	Cleaning door	1	1		
220	272 82 07	Suction pipe unit DN200 (8") HIGH HEAD"HT"	1	1		
221	84 65 80	Gasket 300 PN10	1			
221	345 44 00	Gasket 250 PN10	1	1		
221	295 64 00	Gasket 6"	1	1		

Pos. No	Part. No	Denomination	Qty/Version			
			091	180	280	290
221	84 65 80	Gasket 300 PN10		1		
222	84 34 35	Hexagon head screw M20X90-A2-70	12			
222	84 34 28	Hexagon head screw M20X50-A2-70 (ONLY TRSP)	8	8		
222	84 34 09	Hexagon head screw M16X70-A2-70	8	8		
222	84 34 35	Hexagon head screw M20X90-A2-70		12		
227	83 19 36	Coupling part DN 150 INNER THREAD G6		1		
229	667 40 01	Sticker	2	2	2	2
300	83 58 57	Alarm unit "MINCAS" II	1			1
300	83 58 57	Alarm unit "MINCAS" II		1		
300	83 58 57	Alarm unit "MINCAS" II			1	

# 6 Service Parts

## 6.1 3201.091/180/280/290

Pos. No	Part. No	Denomination	Qty/Version			
			091	180	280	290
800	80 32 79	O-ring kits 3170/3201.090/091/120/180	1	1		
900	601 89 32	Basic repair kit 3170.090,180+3201.091,180	1	1		
901	90 17 52	Oil ISO VG 32	*	*	*	*
902	90 20 54	Grease	*	*	*	*





**ООО «Бауманс Груп» - официальный партнер фирмы Flygt в России.**

**Тел: +7 495 121 49 50**

**Эл. почта: [info@baumgroup.ru](mailto:info@baumgroup.ru)**

**Сайт: [www.baumgroup.ru](http://www.baumgroup.ru)**